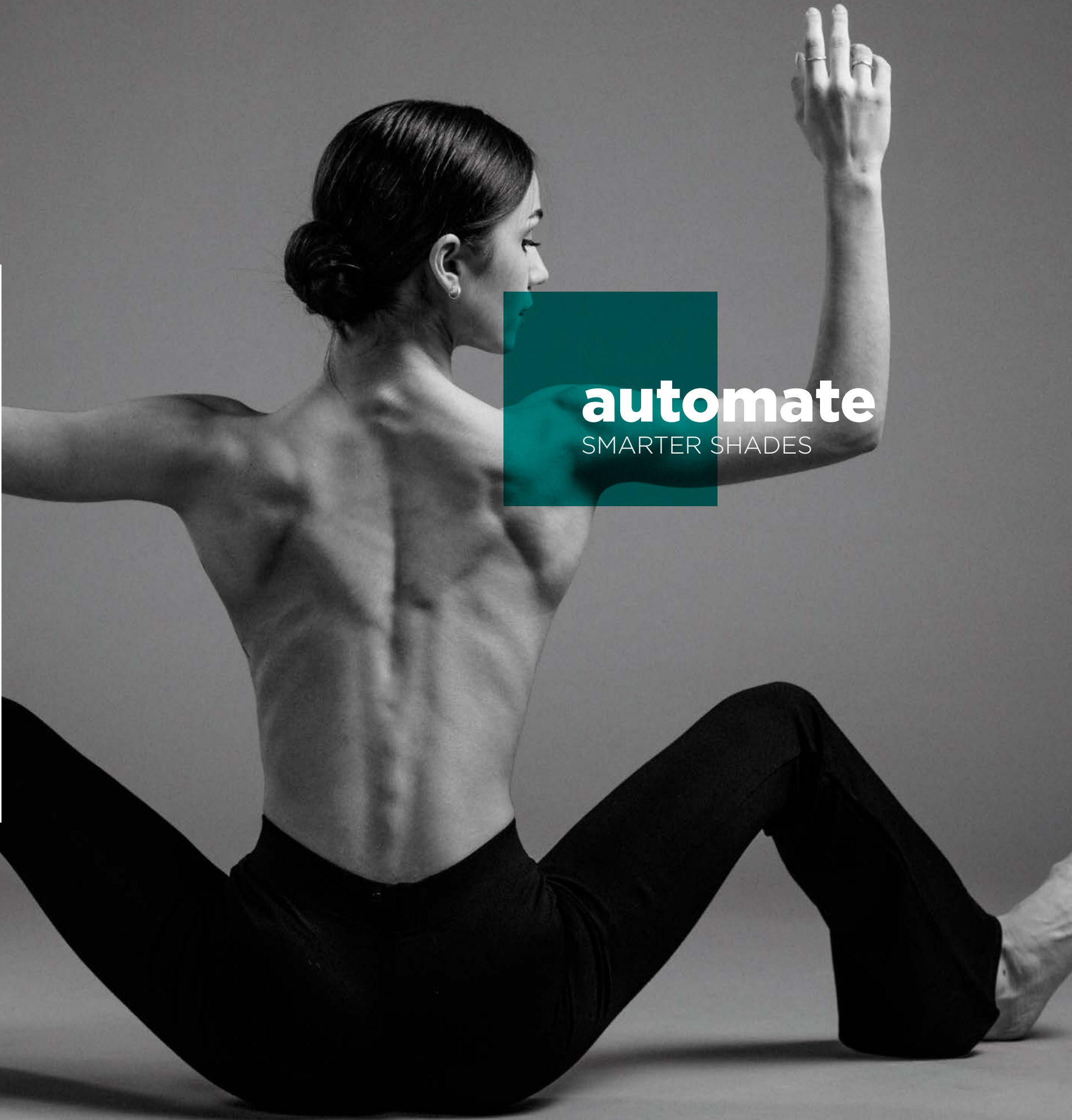


style.



AUTOMATE™

AUTOMATE™ PULSE 2

Designed in California and made to be seen, the second generation of the Pulse hub allows for further customisation with the introduction of additional scenes and timers.

The new hub boasts native sunset and sunrise technology. Shades will raise or lower based on location to allow precise and automatic shade control.

With built-in Wi-Fi or the option of a LAN connection, the Pulse 2 quickly connects to the home's network to unlock the luxury of automated shade control.

Automate Pulse 2 offers more integrations than ever before.

Experience voice-activated shade control via Google Assistant, Amazon Alexa and now Apple Homekit with Siri.

Automate APP

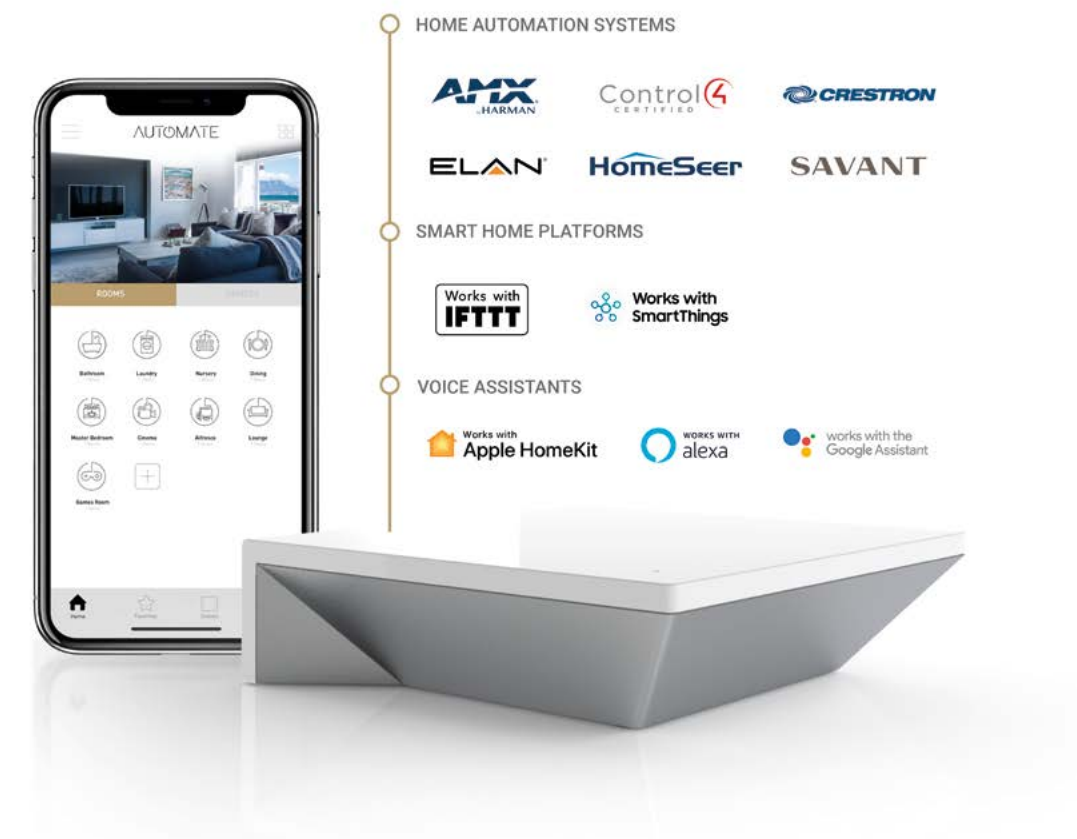
The Automate Pulse 2 App enables sophisticated shade control straight from any iOS or Android smart phone or tablet.

Utilise the Automate Pulse 2 App to group shades by room or scene, establish custom schedules and set timers for convenient and efficient shade control.

Powered by ARC

ARC™ (Automate Radio Communication) is Rollease Acmeda's proprietary, bi-directional communication technology that brings the Automate motorised shade systems together.

ARC communicates the status of shade positioning and battery health straight to the Automate App.





Just ask...



VOICE CONTROL

Utilising voice commands, operating Automate controlled shades is now more convenient than ever.

Automate takes advantage of native integration for shade control with Apple HomeKit & Siri, Google Home & Assistant and Amazon Alexa.

The “native” control responds to the user’s naturally spoken language for shade operation and does not require any additional set-up.

Alternatively, shades can be synchronised with smart devices and actions with IFTTT.

HOME AUTOMATION SYSTEMS



Control shades, lighting, entertainment, security, climate and other connected devices via one convenient control system.

Automate is compatible with a variety of premium home automation systems of these solutions to enable shade control.

For home automation systems outside this compatibility list, simply use the

Automate Relay Module to bridge the connection between the smart system and Automate motors.



COMPATIBLE WITH





Automate PUSH 5 Remote

The cutting-edge design of the new Automate Push5 remote control is modern, simple and functional.

Available in gloss white or matte black finish, the Push 5 features a tactile button layout to improve usability.



Automate PARADIGM REMOTES & WALL SWITCHES

Automate Paradigm wall switches and hand-held remotes feature 15 channels within a contemporary design. The wireless Paradigm controllers are retro-fit ready, making them perfect for all motorised shade applications.

ARC MOTION SENSOR

Installation of an ARC Motion Sensor allows for protection of external awnings from the elements.

The ARC Motion Sensor can detect movement and strong vibrations, such as wind, triggering the motor to automatically close the awning.



SOLAR POWERED ARC WIND, LIGHT & RAIN SENSOR

The solar-powered ARC Wind, Sun & Rain Sensor naturally reacts to the elements to automatically open or close an awning, always providing a comfortable external environment or protection of the awning.



LUX

For indoor shades, our Style Internal Sunlight Sensor Lux can automatically open and close your blinds to help control sun glare, home security, protect your interior from UV damage and assist to keep your home cool.





Automate Wire-free Li-ion ZERO motors

The new lithium-ion battery motors boast a patented “wire-free” design with the antenna cable concealed within the motor head and a micro-USB port for charging.

Additionally, the motors feature new ‘soft close’ and ‘battery check’ technology. With the press of a button the motor moves the shade down to signify the battery percentage level, while ‘soft close’ ensures an elegant and quiet finish at the end of the shade’s movement.

Automate Wire-Free Li-ion Zero allows for proficient installation within residential homes and small commercial projects, with no electrical wiring required and the ability to be retrofit into existing Rollease Acmeda systems*.



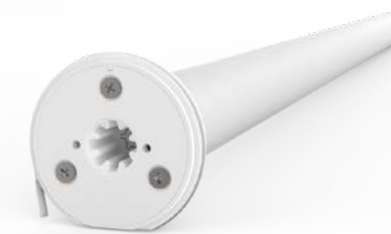
*Retrofit capability only possible with RB07, RB08 and RB09 systems.



Automate Wire-Free Li-ion Zero Q0.5
5V, 0.5Nm, Ø25mm, 20-28RPM, 552mm long



Automate Wire-Free Li-ion Zero Q1.1
5V, 1.1Nm, Ø25mm, 20-28RPM, 552mm long



Automate Wire-Free Li-ion Zero Q2.0
5V, 2.0Nm, Ø28mm, 20-28RPM, 649mm long



Automate Wire-Free Li-ion Q3.0 v2
5V, 3.0Nm, Ø35mm, 20-28PRM, 851mm long



Automate Wire-Free Li-ion Q10 v2
5V, 10.0Nm, Ø45mm, 9-5RPM, 817mm long



Automate SOLAR Panel

With its smaller design and improved performance in low light, the new Automate Solar Panel offers an energy efficient upgrade for the entire Automate Wire-Free Li-ion range of motors.





Automate EXTERNAL MOTORS

The **Automate FT15** has been tailored for Rollease Acmeda's Z-Screen and External Wire Guide systems. When used with Rollease Acmeda's Ultra-Lock, a simple touch will activate the FT15 motor to automatically close, lock and tension the blind for increased stability and ease of use.

At the upper end of the scale, the **Automate X50** provides all the benefits of having smart shades with the lifting capacity required to control the Zipscreen Extreme and Wire Guide Extreme.



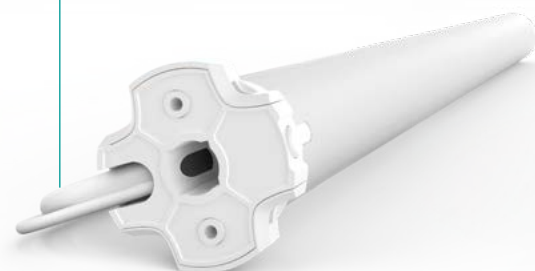
Automate FT15

240V, 15.0Nm, Ø45mm, 15RPM, 621mm long



Automate E&M ROLLER Motors

For roller shades to suit medium to large windows and large commercial projects, the **Automate E** range of AC powered motors and the **Automate M** range of mechanical limit motors are the ideal hard-wired choice.



Automate E6

240V, 6.0Nm, Ø35mm, 28RPM, 579mm long



Automate M6

240V, 6.0Nm, Ø35mm, 28RPM, 473mm long

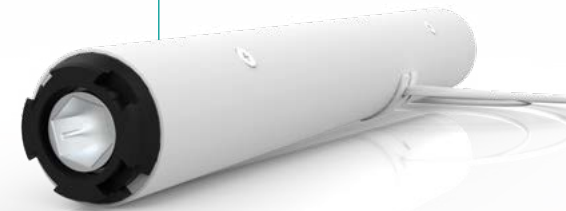




Automate ROMAN MOTOR

The Automate CL 0.8 motor can be paired with Rollease Acmeda's SS38 Motorised System, providing a flexible motorised solution for roman shades.

Offering the choice of battery power or 12V wired connection, the CL 0.8 also integrates with the Automate suite of controllers to achieve the smart shade experience.



Automate CL 0.8

12V, 0.8Nm, Ø24mm, 34-50RPM, 193mm long



Automate CURTAIN MOTOR

The Automate C motor for curtains features stand-out "soft touch" technology. A gentle pull on the fabric will initiate movement to automatically open or close the curtain.

This impressive motor has been designed to be quiet for acoustic comfort and offers the luxury of shade automation with the suite of Automate controls.

Automate C

240V, 1.2Nm, 14RPM, 335mm long



Motorization



FEATURES

- Recommended for rollers up to sizes of 4,25 m x 4,25 m
- Levelling Control
- Simple limit setting and adjustment
- Favorite position
- 3 operational speed settings available
- 2 way RF communication
- Rechargeable built in Li-ion battery
- Up to 500 up & down cycles, per charge (based on recommended max. shade size)
- Optional Solar powered charger
- New ARC protocol for simple programming

BENEFITS

AUTOMATE | Li-ion ARC motors offer a wire free rechargeable easy to use and program solution to suit a large range of applications with varying torques and speed levels.

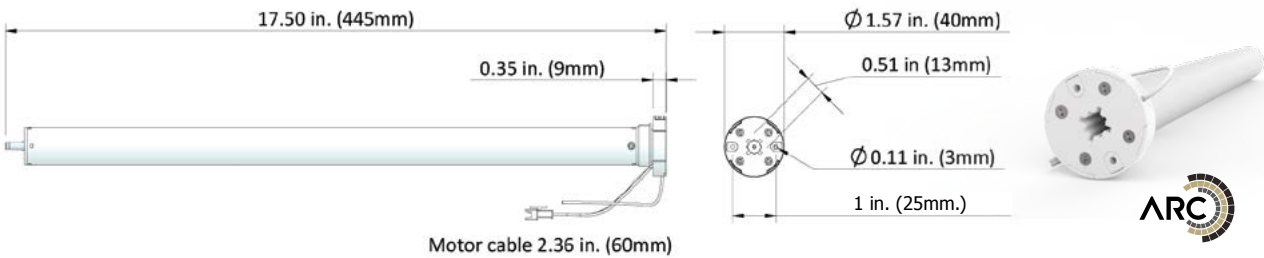
The Levelling Control feature allows for precise positioning of multiple shades ensuring perfect alignment. Additionally, a favourite position can be pre-set and recalled at any time.



ARC LI-ION MOTORS



Li-Ion 0.5 MOTOR AUTOMATE



Battery Powerd

Solar Charging

Electronic Limit

Level Control

Favorite Position

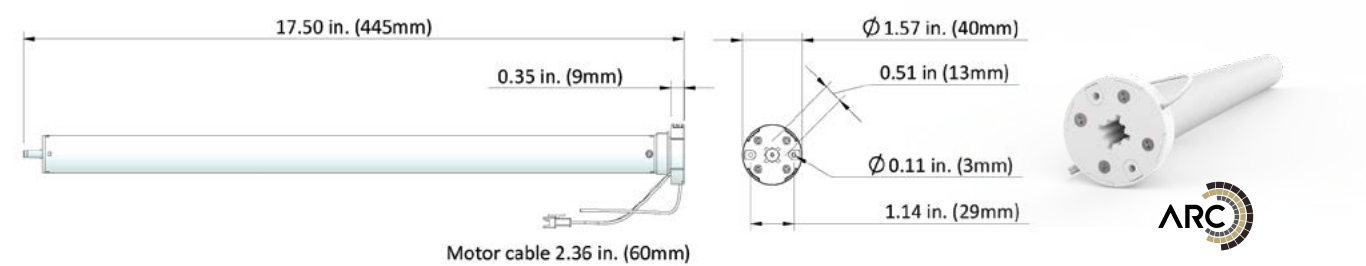
433 MHz
BI-Directional

Selectable RPM

Voltage	12	Temp Working Range	0° C to 60° C	IP Rating	IP 44
Torque	0.5 Nm	Sound Level	-53 db	Limit Switch Type	Electronic
Max Run Time	10 Min	Insulation Class	III	Amps	0.83 A
Speed	40 r.p.m. (Adjustable to 30 or 20)	Operating Cycles	-500 cycles for Maximum recommended measurements	Battery Size/Type	1400mAH
Radio Frequency	433,92 MHz	RF Modulation	FSK		



Li-Ion 1.1 MOTOR AUTOMATE

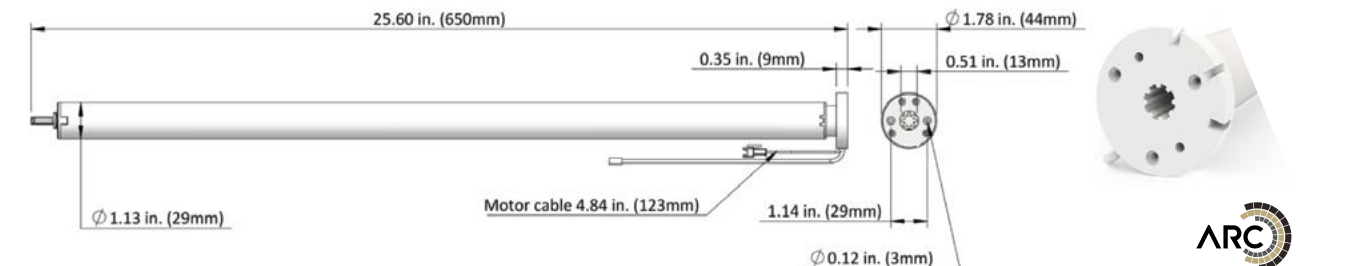


Battery PowerSolar ChargingElectronic LimitLevel ControlFavorite Position433 MHz BI-DirectionalSelectable RPM

Voltage	12	Temp Working Range	0° C to 60° C	IP Rating	IP 44
Torque	1.1 Nm	Sound Level	-53 db	Limit Switch Type	Electronic
Max Run Time	10 Min	Insulation Class	III	Amps	0.83 A
Speed	40 r.p.m. (Adjustable to 30 or 20)	Operating Cycles	-500 cycles for Maximum recommended measurements	Battery Size/Type	1400mAH
Radio Frequency	433,92 MHz	RF Modulation	FSK		



Li-Ion 2.0 MOTOR AUTOMATE

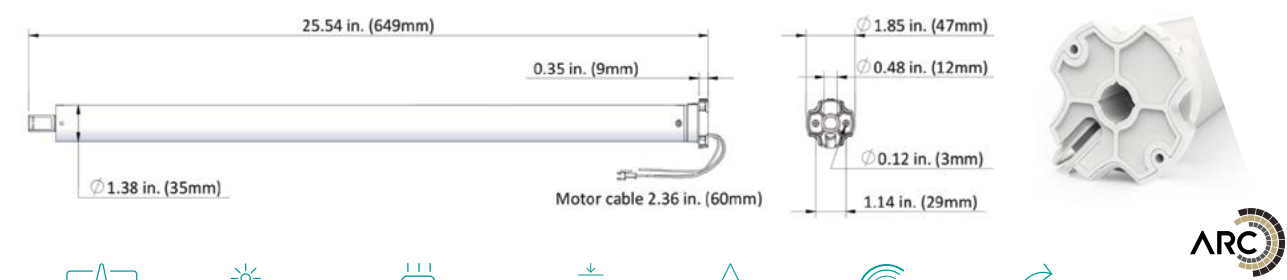


Quiet OperationBattery PowerSolar ChargingElectronic LimitLevel ControlFavorite Position433 MHz BI-DirectionalSelectable RPM

Voltage	12	Temp Working Range	0° C to 60° C	IP Rating	IP 44
Torque	2 Nm	Sound Level	-42 db	Limit Switch Type	Electronic
Max Run Time	10 Min	Insulation Class	III	Amps	1.25 A
Speed	28 r.p.m. (Adjustable to 24 or 20)	Operating Cycles	-500 cycles for Maximum recommended measurements	Battery Size/Type	2600mAH
Radio Frequency	433,92 MHz	RF Modulation	FSK		



Li-Ion 3.0 MOTOR AUTOMATE

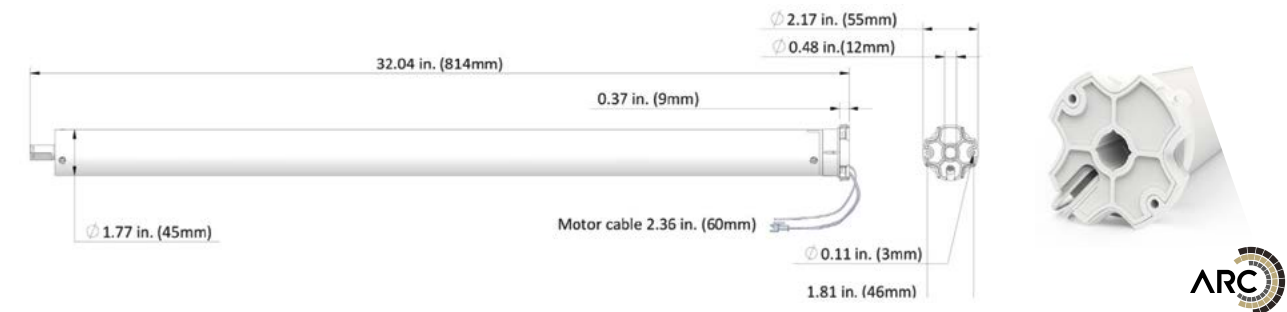


Battery PowerSolar ChargingElectronic LimitLevel ControlFavorite Position433 MHz BI-DirectionalSelectable RPM

Voltage	12	Temp Working Range	0° C to 60° C	IP Rating	IP 44
Torque	3 Nm	Sound Level	-53 db	Limit Switch Type	Electronic
Max Run Time	10 Min	Insulation Class	III	Amps	1.67 A
Speed	28 r.p.m. (Adjustable to 24 or 20)	Operating Cycles	-500 cycles for Maximum recommended measurements	Battery Size/Type	4000mAH
Radio Frequency	433,92 MHz	RF Modulation	FSK		



Li-Ion 10.0 MOTOR AUTOMATE



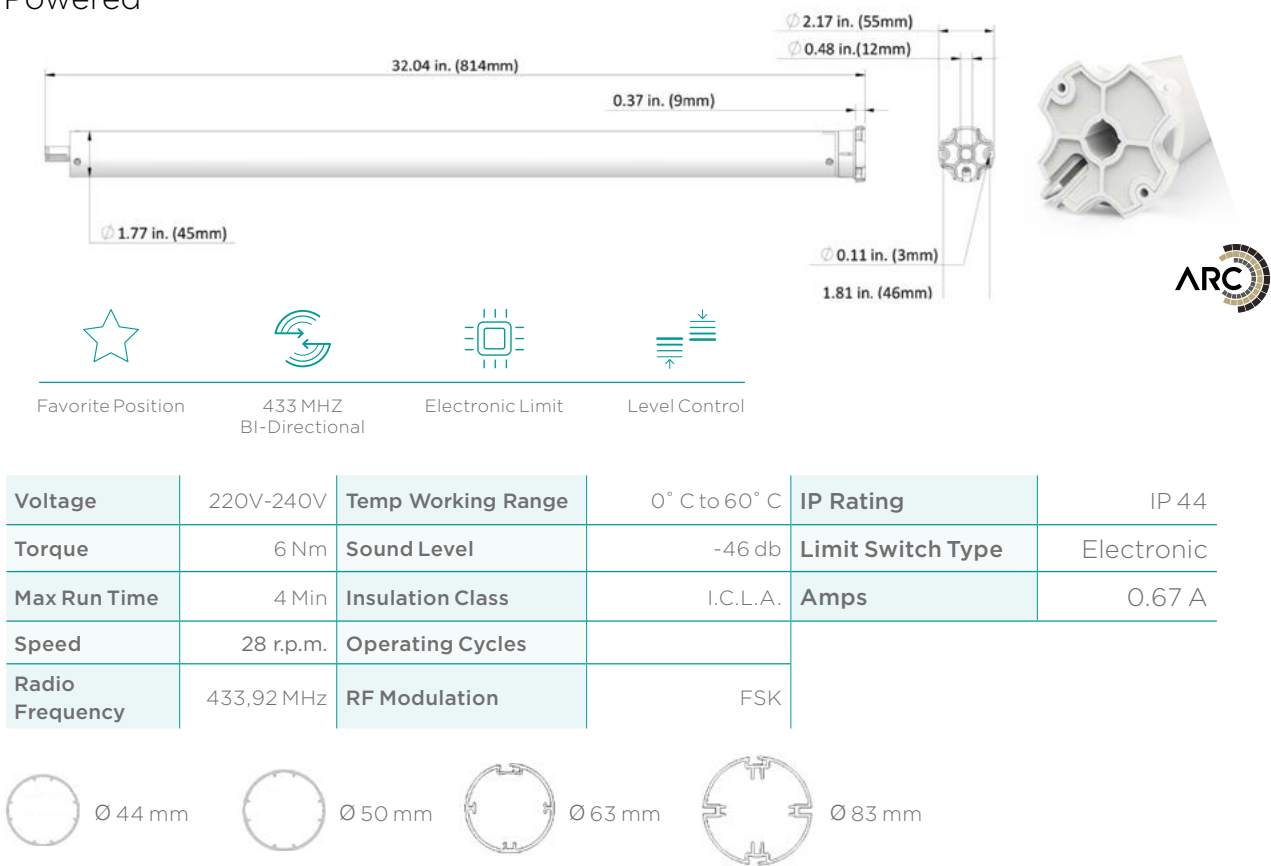
Battery PowerSolar ChargingElectronic LimitLevel ControlFavorite Position433 MHz BI-DirectionalSelectable RPM

Voltage	12	Temp Working Range	0° C to 60° C	IP Rating	IP 44
Torque	3 Nm	Sound Level	-53 db	Limit Switch Type	Electronic
Max Run Time	10 Min	Insulation Class	III	Amps	1.67 A
Speed	28 r.p.m. (Adjustable to 24 or 20)	Operating Cycles	-500 cycles for Maximum recommended measurements	Battery Size/Type	4000mAH
Radio Frequency	433,92 MHz	RF Modulation	FSK		



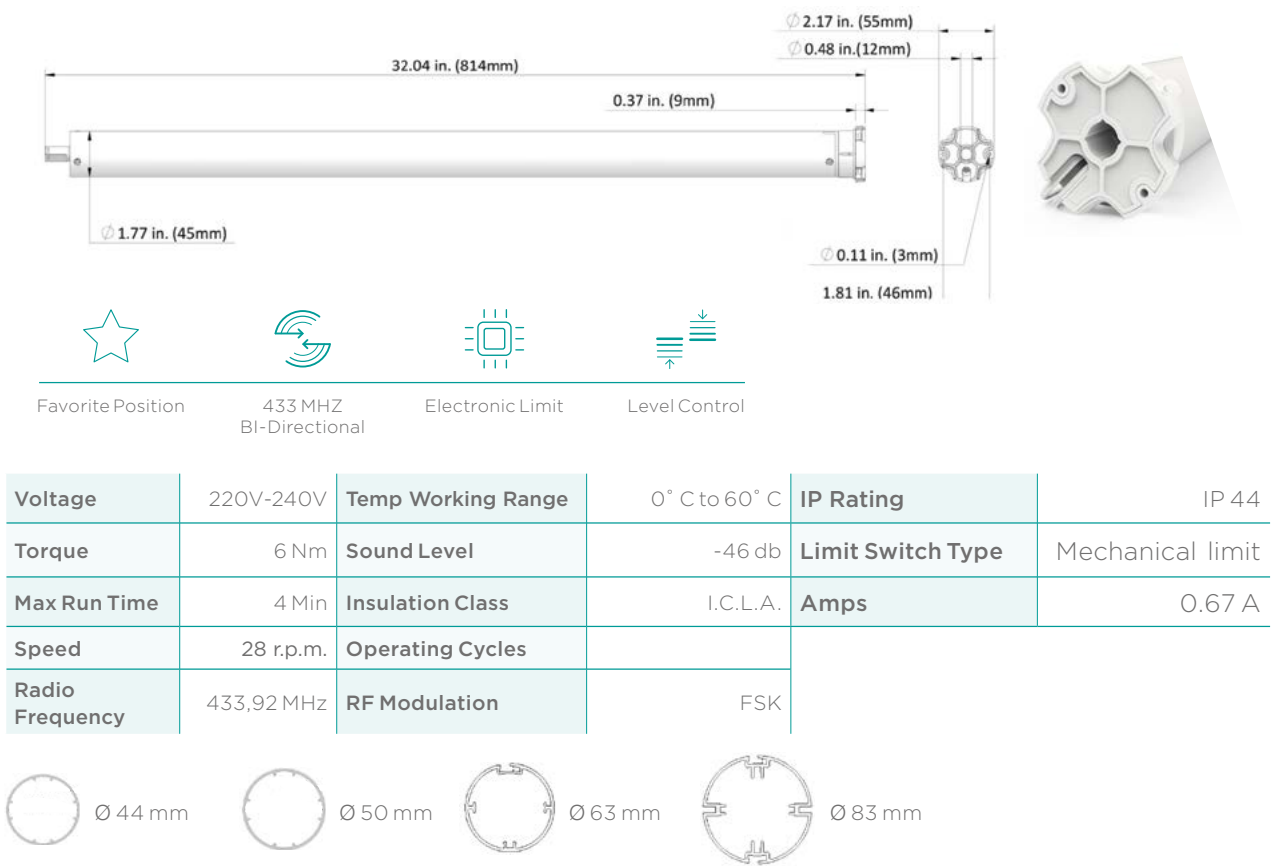
AUTOMATE E6 ARC

AC Powered



AUTOMATE M6 AC Limit

AC Powered



ROLLER BLIND

Specification Guide

	Ø Tube	Chain	Crank	Motor	Battery Motor	Spring	Coupling	Cable Guide	Cassette or Fascia	Black out	Internal	External
RSL Roller System	Ø32 mm	•			•			•	•	•	•	
	Ø38 mm	•	•		•		•	•	•		•	
	Ø44 mm			•	•		•	•	•		•	
	Ø50 mm	•		•	•			•	•	•	•	
	Ø63 mm	•		•	•			•	•		•	
Extreme System	Ø83 mm	•		•	•			•	•		•	
	Ø110 mm		•	•				•	•		•	•
	Ø130 mm		•	•				•	•		•	•
ZIP System	Ø160 mm		•	•				•	•		•	•
	Ø78 mm		•	•				•	•	•	•	•

In order to provide solutions to the requirements of each project, Style can provide a broad range of solutions in solar protection that satisfies the functionality and aesthetic requirements as well as energy efficiency and light management.

