

style.



ceiling-pocket
CONTRACT CEILING POCKET SYSTEM

ceiling-pocket

CONTRACT CEILING POCKET SYSTEM



POPULAR SIZE
FILLS OUT THE
CONTRACT LINE
Style now offers
5 inch / 127 mm size.

FEATURES & BENEFITS

Works with Single Skyline, Dual Skyline and Motorized roller shades.

Accommodates up to a 121 mm. max roll diameter.

Bottom closure provides easy access for repairing or replacing shades.

Curved edges for easy installation in unevenly shaped boxes.

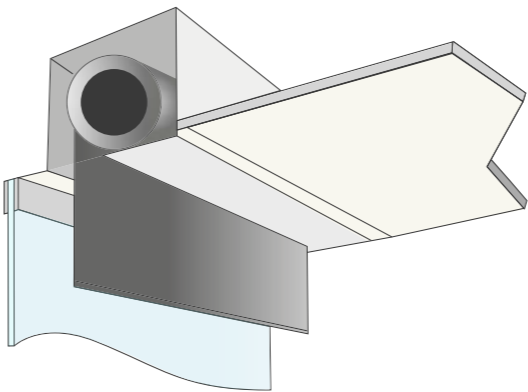
Blackout option using side and bottom channels.

Works with current 5" fascia bracket, so less inventory.

Works with SL15, SL20, SL30, G200 and G400.

Pocket easily hides large shades in ceiling, or right to wall inside the pocket. Great for projection screens.

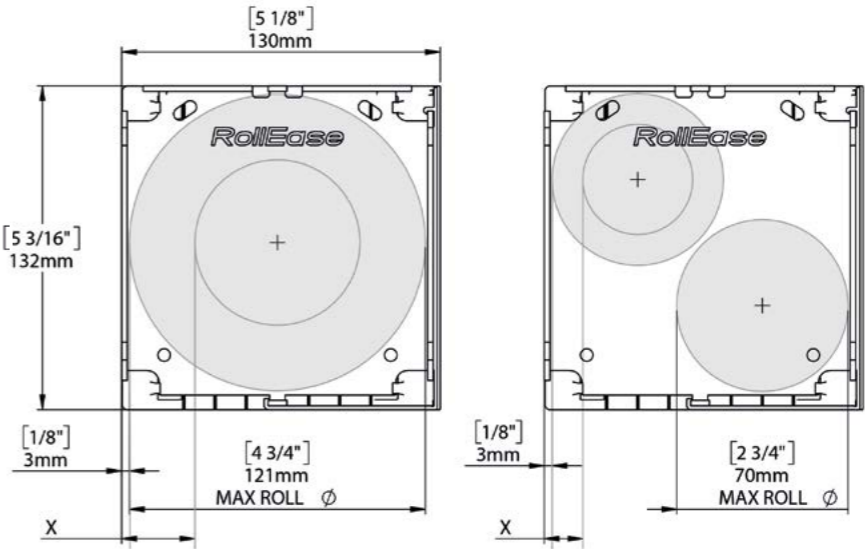
Rounded edge on pocket eases installation.
Keep motor wires out of the way by inserting a D-ring into the top pocket groove and using a zip tie to secure the wire.



QUICK REFERENCE SHEET

Widest variety of clutch options featuring award-winning and patented technology advancements that provide the smoothest and easiest pull forces in the industry.

Bottom closures and Black-out Side.
Multiple Tube
Manual and Motorized options.
Quality design for fast, cost-effective and trouble-free installation.



Compatible Skyline Clutches	Max Tube Diameter	Side Channels Available	Max Roll O Single	Max Roll O Double	Max Width Single	Max Width Double
SL15, SL20, SL30, G200, G400	82.6 mm.	✓	20.65 mm.	70 mm.	16 ft (4.88 m.)	9.84 ft (3.00 m.)