

jamaica BO BLACKOUT | TEXTURE

believe
Roller Collection

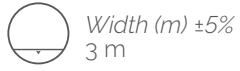
100% PES



Roller



Blackout



Width (m) $\pm 5\%$
3 m



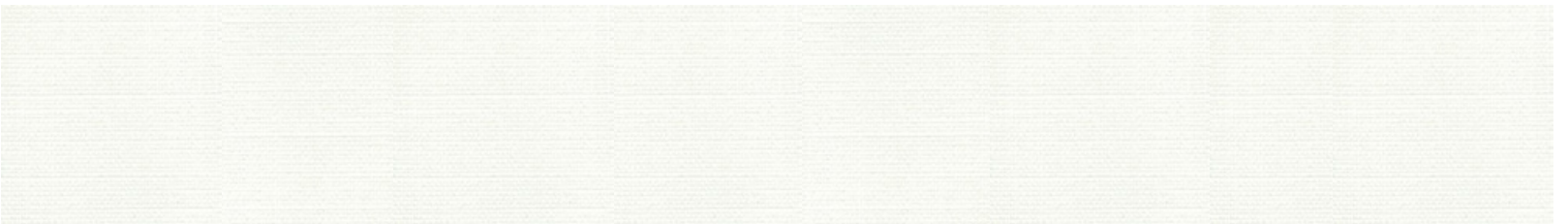
Weight $g/m^2 \pm 5\%$
310 g/m^2



Thickness (mm) $\pm 5\%$
0.49 mm



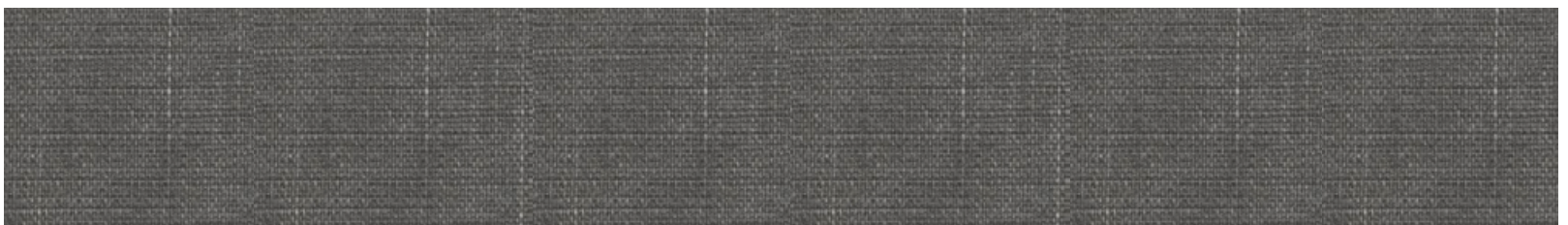
JAM02 - WHITE



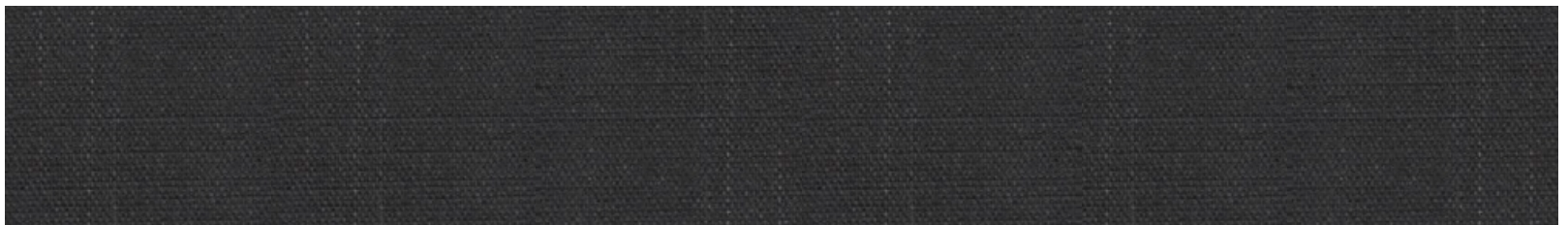
JAM02 - BEIGE



JAM02 - SMOKY GREY



JAM02 - DARK GREY



JAM02 - BLACK