

style.



RSL32 ROLLER SYSTEM

RSL32

The RSL32 Roller System offers sleek rounded chain guard profiles which are ideal for both residential and commercial applications. The RSL32 System can lift between 3.6 and 5.9 kg.

AESTHETICAL FEATURES

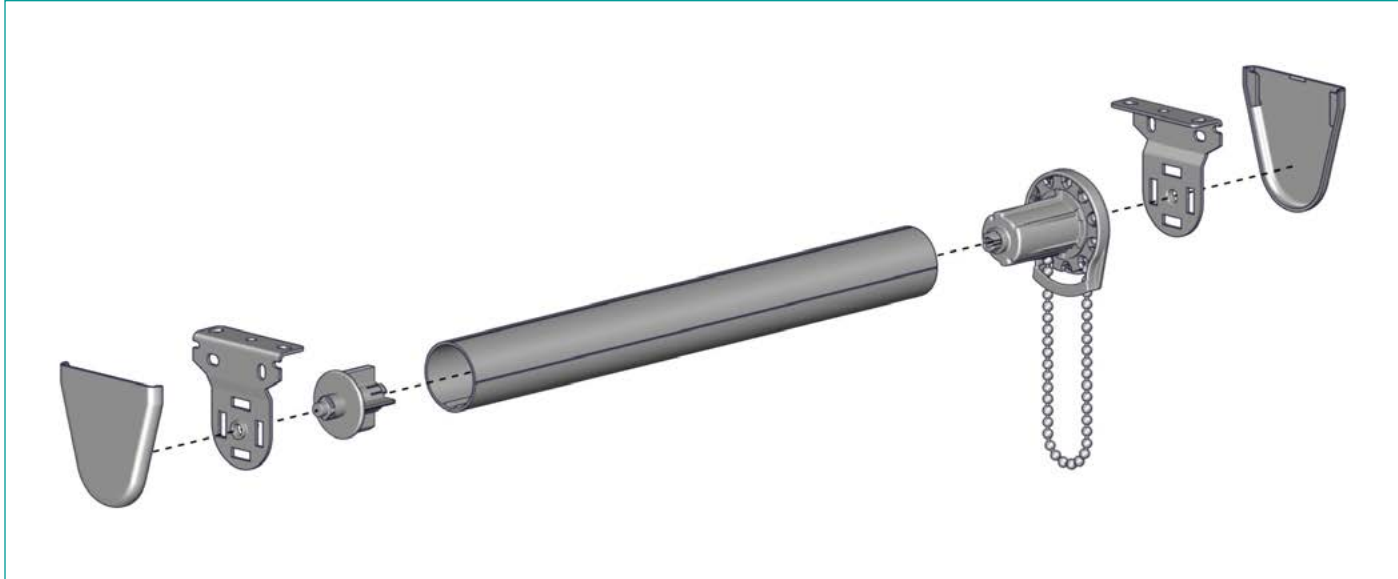
- Sleek, rounded chain guard design
- Reduced light gaps

ASSEMBLY / PRODUCTION FEATURES

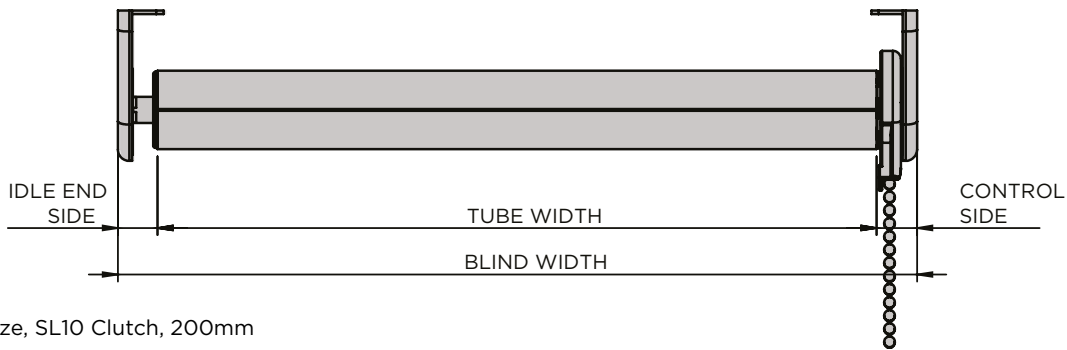
- Greater flexibility in installation with spring loaded idle end
- Universal brackets
- Hooked clutches for a secure application
- Easy chain attachment

FUNCTIONAL BENEFITS

- Smooth operation
- Long-lasting fiberglass-filled nylon construction
- Limited lifetime warranty



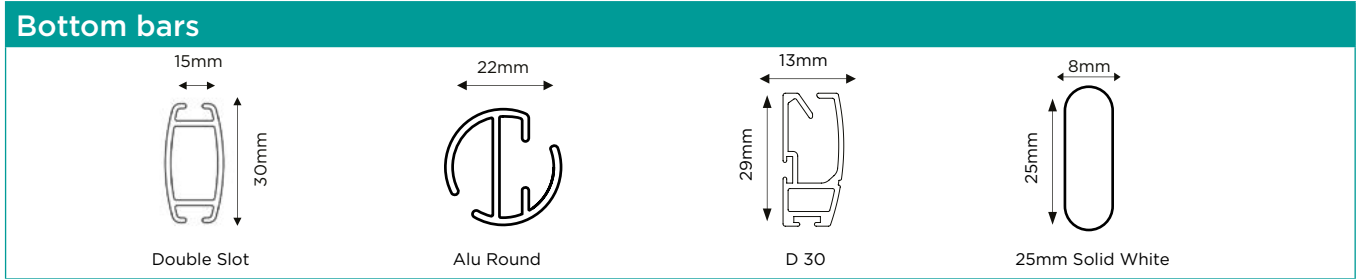
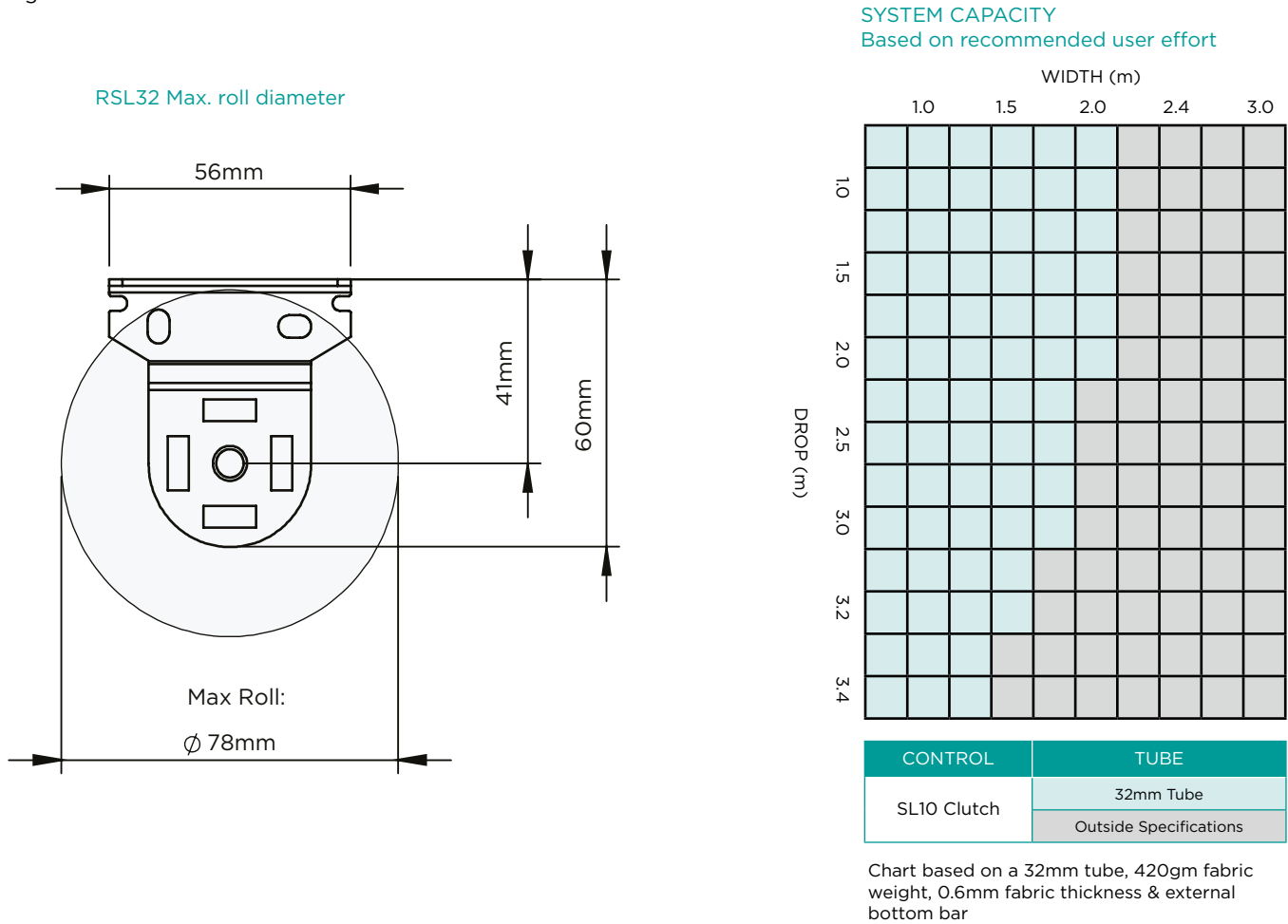
RSL32 ROLLER SYSTEM



Minimum blind size, SL10 Clutch, 200mm

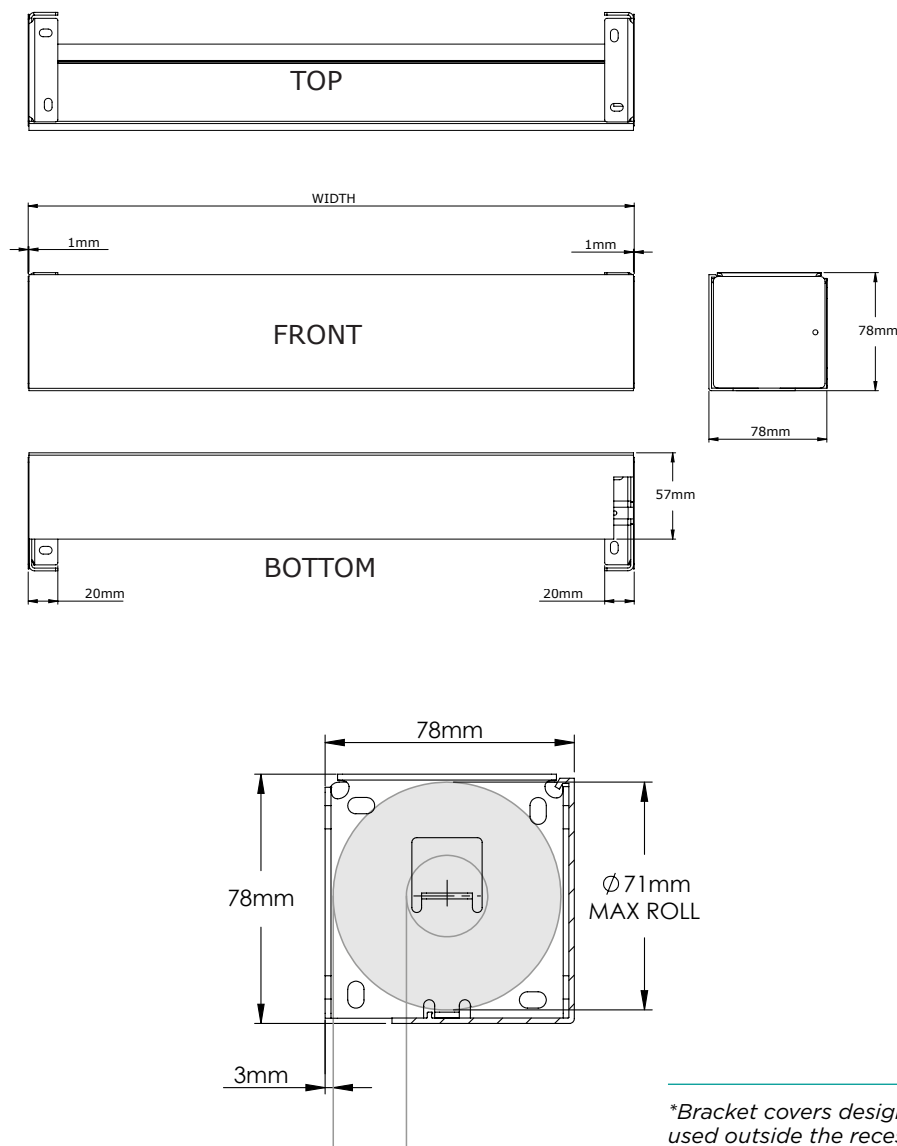
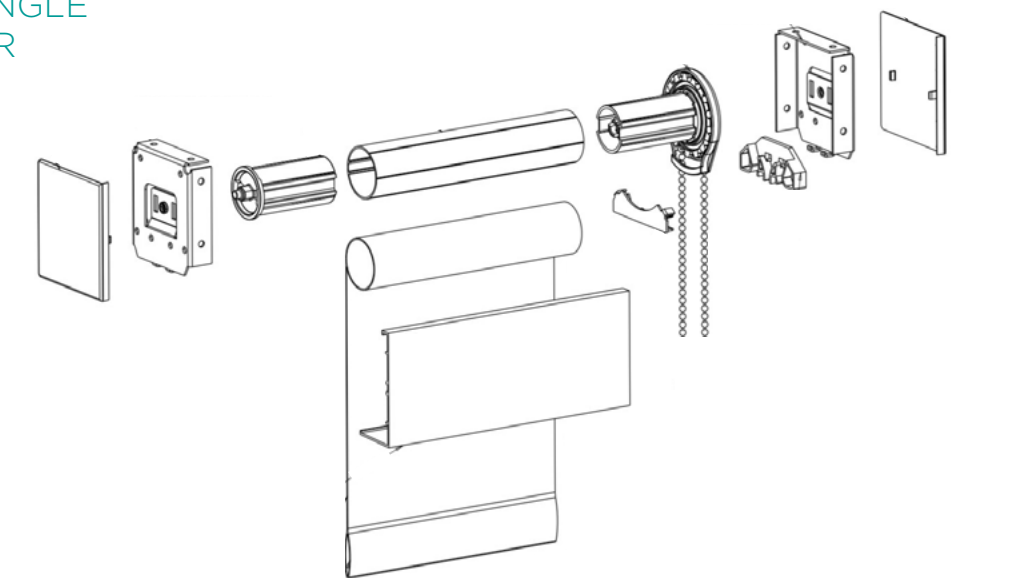
	OVERALL DEDUCTIONS	CONTROL SIDE (SL10)	IDLE SIDE DEDUCTIONS
Without covers	28	15	13
With covers	32	17	15

Fig. 1



RSL32 ROLLER SYSTEM

3" FASCIA
FOR SINGLE
ROLLER



*Bracket covers designed to be used outside the recess only

RSL32 ROLLER SYSTEM

Standards

- 32mm single slot tube
- SL10 Clutch
- RH Controls (unless otherwise specified)
- Metal chain
- White brackets
- Sewn in bottom bar except on FR fabric which are white alu round (unless default bottom bar otherwise specified in fabric information)
- 1 child safety P-clip per blind

Optional extras

Bracket covers, white plastic
1mm Nylon coated steel guide wires (independently fixing) D30 bottom bar only (included in price)
Sewn in bottom bar
White aluminium bottom bar
Silver aluminium bottom bar
Welded bottom pocket with open ends
Welded bottom pocket with closed ends
D30 bottom bar white
Double Brackets
3" fascia for single roller
Backbar for single roller

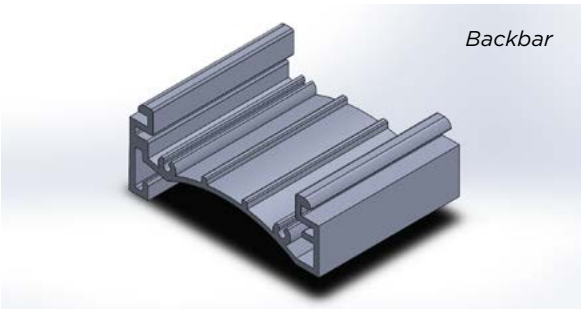
MOTORISATION

Features

- Levelling Control
- Simple limit setting and adjustment
- Favorite position
- 3 operational speed settings available
- 2 way RF communication
- Rechargeable built in Li-ion battery
- Up to 500 up & down cycles, per charge (based on recommended max. shade size)
- New ARC protocol for simple programming

Benefits

AUTOMATE | Li-ion ARC motors offer a wire free rechargeable easy to use and program solution to suit a large range of applications with varying torques and speed levels. The Levelling Control feature allows for precise positioning of multiple shades ensuring perfect alignment. Additionally, a favourite position can be pre-set and recalled at any time.



Backbar

Motorisation Optional extras

Rollease Automate LI-ON Zero Motor 0.5Nm
Automate LI-ON AC/DC charger (UK)
Automate 1 channel handset
Automate 15 channel handset
Automate 1 channel wall switch
Automate 15 channel wall switch
Push 5 channel White handset
Push 5 channel Black handset
Automate pulse 2 hub
Automate solar panel
Sun sensor
Wind sensor

RSL38 ROLLER SYSTEM

RSL38

The RSL38 Roller System offers sleek rounded chain guard profiles which are ideal for both residential and commercial applications. The RSL38 System can lift between 3.6 and 5.9 kg.

AESTHETICAL FEATURES

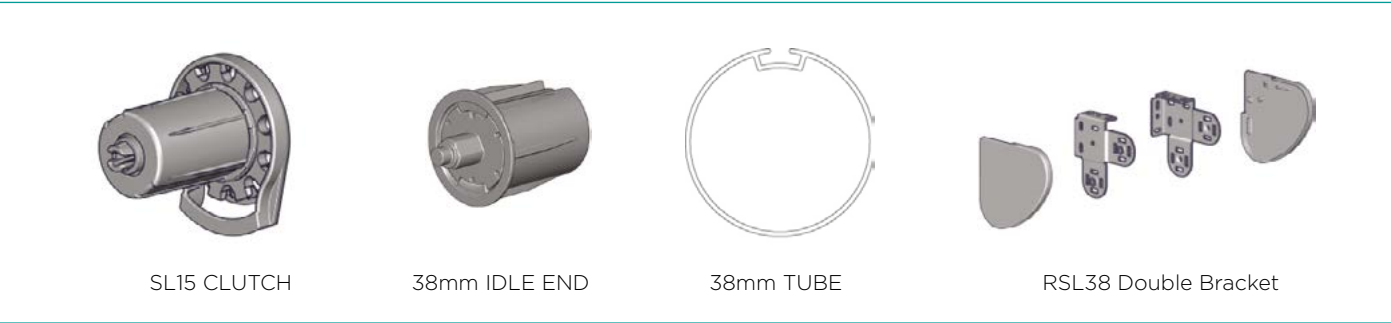
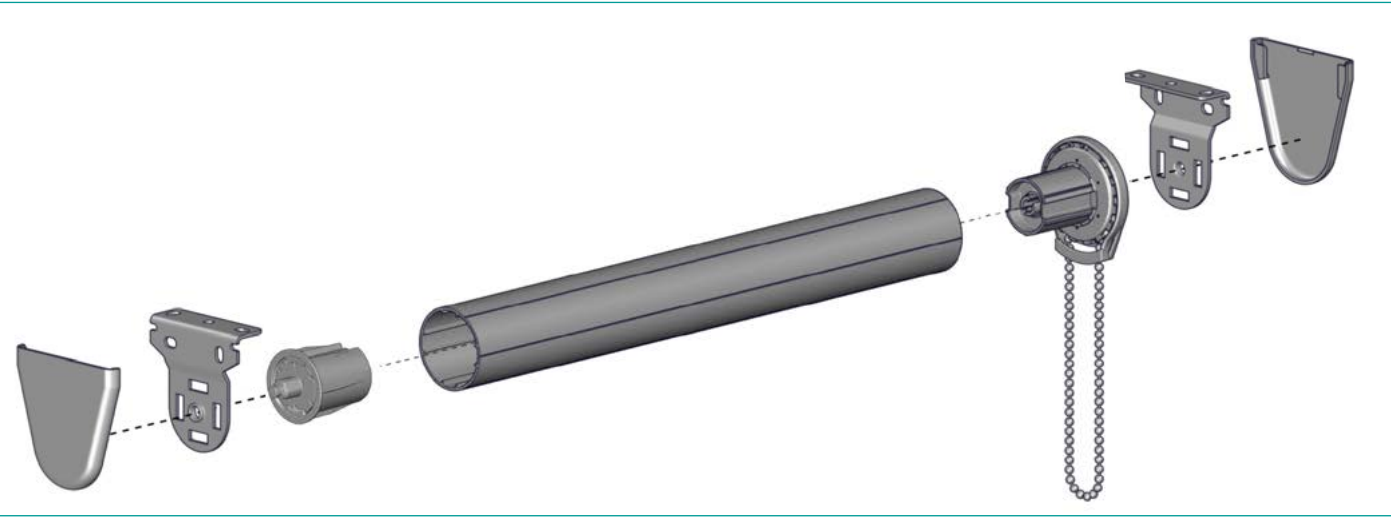
- Sleek, rounded chain guard design
- Reduced light gaps

ASSEMBLY / PRODUCTION FEATURES

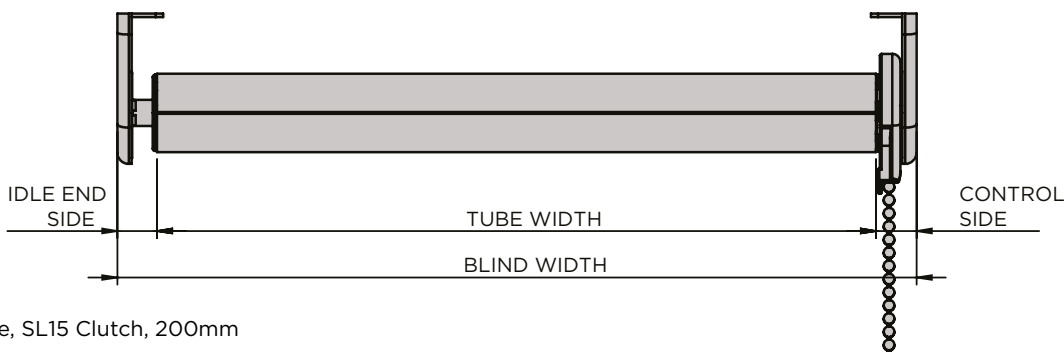
- Greater flexibility in installation with spring loaded idle end
- Universal brackets
- Hooked clutches for a secure application
- Easy chain attachment

FUNCTIONAL BENEFITS

- Smooth operation
- Long-lasting fiberglass-filled nylon construction
- Limited lifetime warranty



RSL38 ROLLER SYSTEM



Minimum blind size, SL15 Clutch, 200mm

	OVERALL DEDUCTIONS	CONTROL SIDE (SL15)	IDLE SIDE DEDUCTIONS
Without covers	28	15	13
With covers	32	17	15

Fig. 2

SYSTEM CAPACITY
Based on recommended user effort

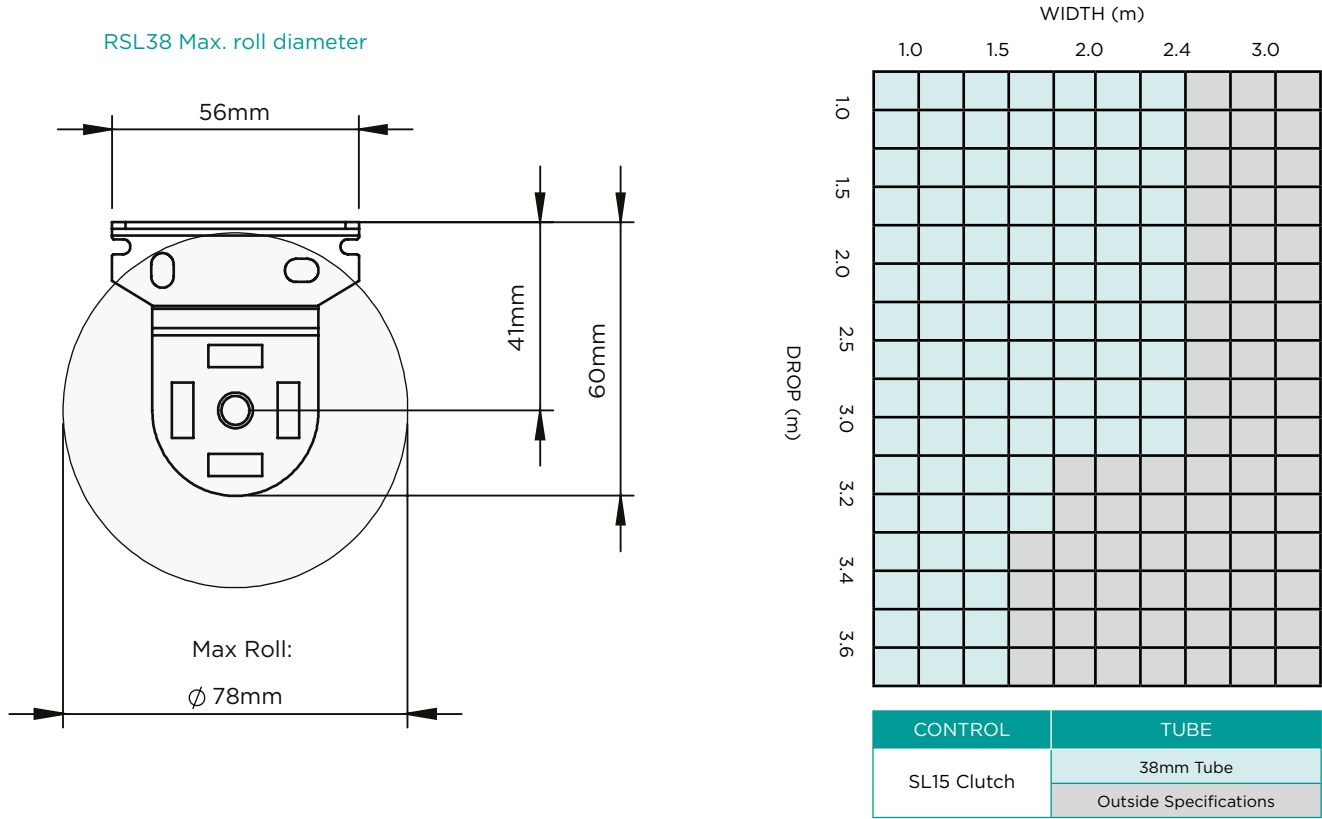
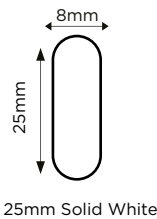
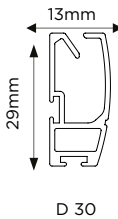
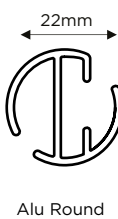
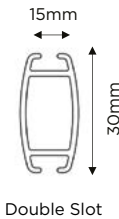


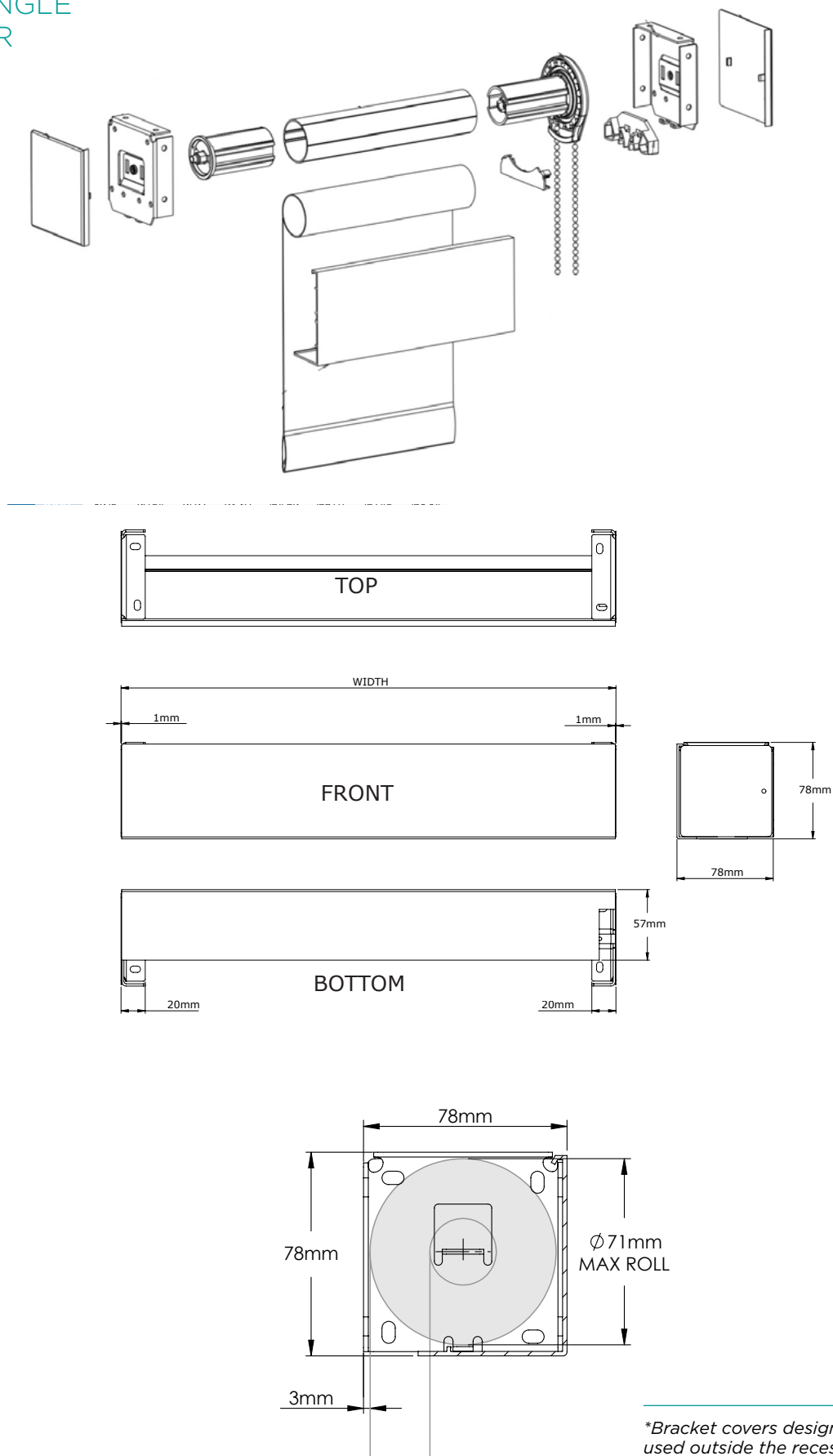
Chart based on a 38mm tube, 420gm fabric weight, 0.6mm fabric thickness & external bottom bar

Bottom bars



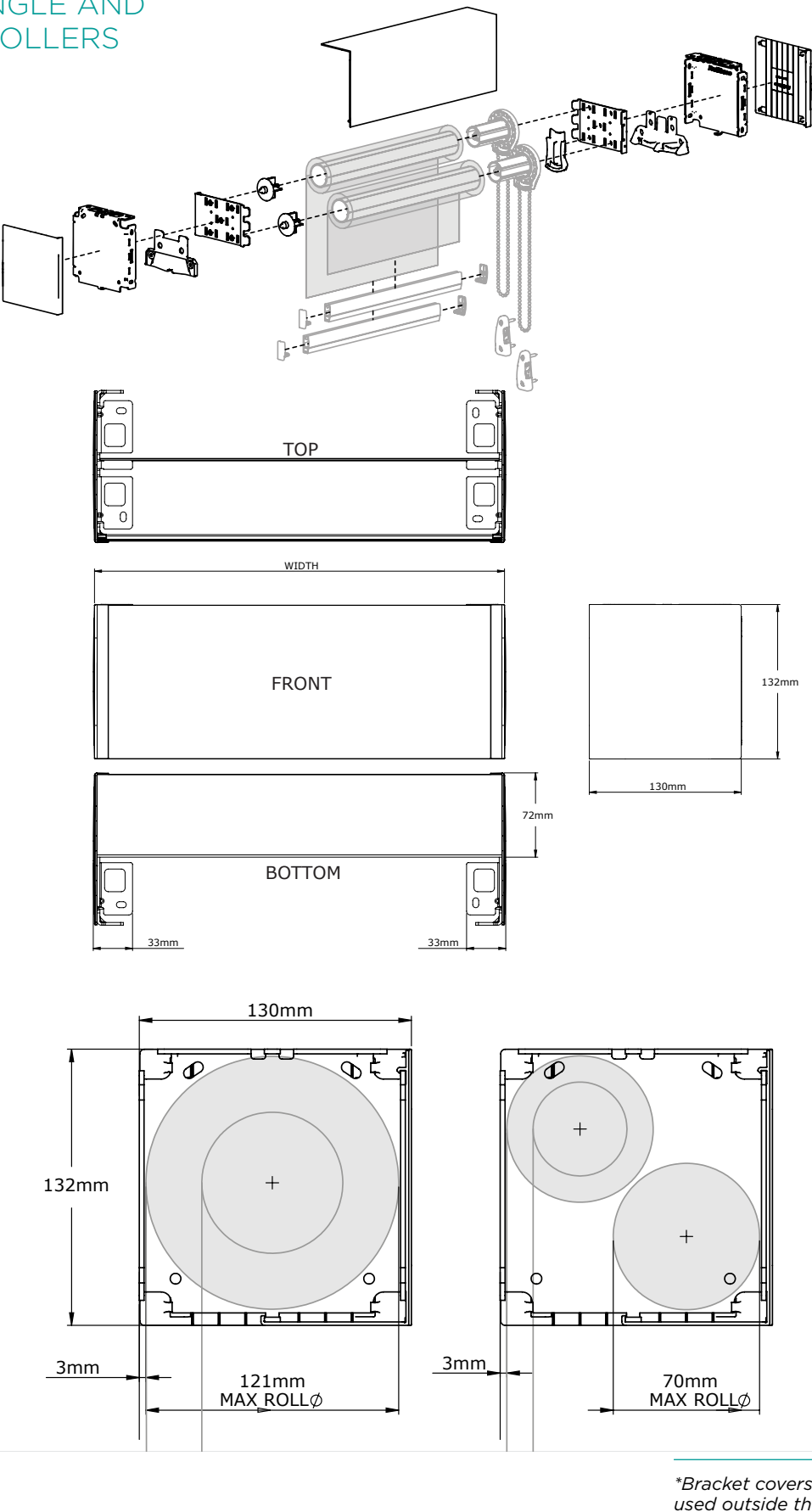
RSL38 ROLLER SYSTEM

3" FASCIA
FOR SINGLE
ROLLER



RSL38 ROLLER SYSTEM

5" FASCIA
FOR SINGLE AND
DUAL ROLLERS



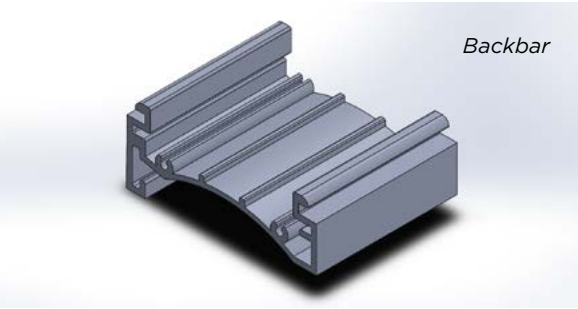
RSL38 ROLLER SYSTEM

Standards

- 38mm single slot tube (for Chain operation)
- 44mm tube (for 240V motorization)
- SL15 Clutch
- RH Controls (unless otherwise specified)
- Metal chain
- White brackets
- Sewn in bottom bar except on FR fabric which are white alu round (unless default bottom bar otherwise specified in fabric information)
- 1 child safety P-clip per blind

Optional extras

Bracket covers, white plastic
1mm Nylon coated steel guide wires (independently fixing) D30 bottom bar only (included in price)
Sewn in bottom bar
White aluminium bottom bar
Silver aluminium bottom bar
Welded bottom pocket with open ends
Welded bottom pocket with closed ends
D30 bottom bar white
Double Brackets
3" fascia for single roller
5" fascia for single and dual rollers
Backbar for single roller



MOTORISATION

Features

- Levelling Control
- Simple limit setting and adjustment
- Favorite position
- 3 operational speed settings available
- 2 way RF communication
- Rechargeable built in Li-ion battery
- Up to 500 up & down cycles, per charge (based on recommended max. shade size)
- New ARC protocol for simple programming

Benefits

AUTOMATE | Li-ion ARC motors offer a wire free rechargeable easy to use and program solution to suit a large range of applications with varying torques and speed levels. The Levelling Control feature allows for precise positioning of multiple shades ensuring perfect alignment. Additionally, a favourite position can be pre-set and recalled at any time.

Motorisation Optional extras

Rollease Automate ZERO Li-ion Motor 1.1Nm
Rollease Automate ZERO Li-ion Motor 2Nm
Rollease E6 240V RTS Motor 6Nm
Rollease M6 240V Hardwire Motor 6Nm
Automate LI-ON AC/DC charger (UK)
Automate 1 channel handset
Automate 15 channel handset
Automate 1 channel wall switch
Automate 15 channel wall switch
Push 5 channel White handset
Push 5 channel Black handset
Automate pulse 2 hub
Automate solar panel
Sun sensor
Wind sensor

RSL50 ROLLER SYSTEM

RSL50

The RSL50 Roller System offers sleek rounded chain guard profiles which are ideal for both residential and commercial applications. The premium G200 clutch features an advanced geared patented technology, the planetary gearing mechanism enhances the lifting capacity by up to three times all whilst retaining minimal user effort.

AESTHETICAL FEATURES

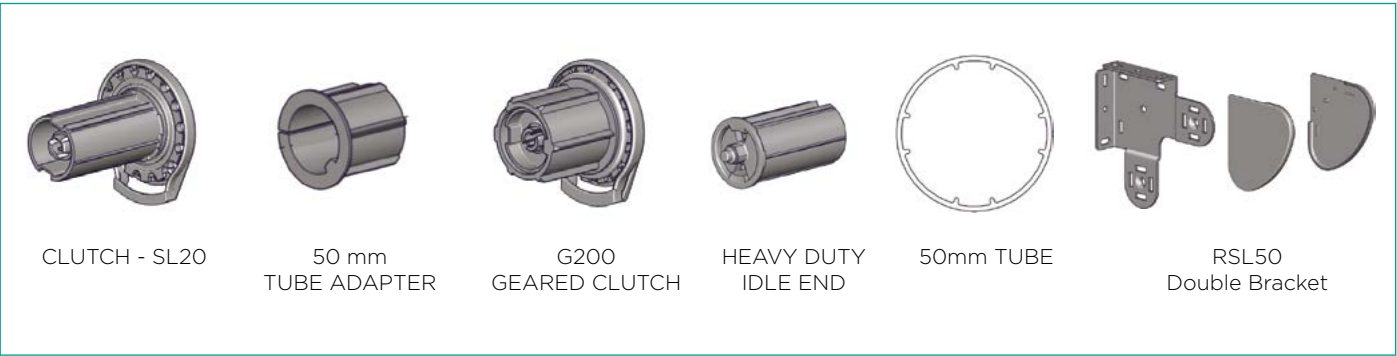
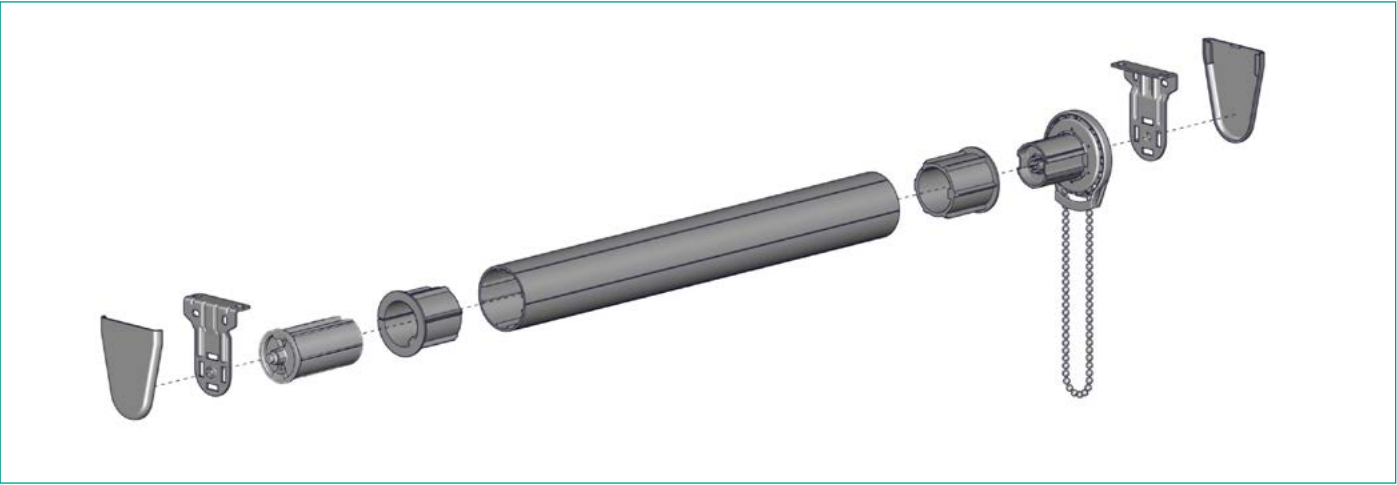
- Sleek, rounded chain guard design
- Reduced light gaps

ASSEMBLY / PRODUCTION FEATURES

- Greater flexibility in installation with spring loaded idle end
- Universal brackets
- Hooked clutches for a secure application
- Easy chain attachment

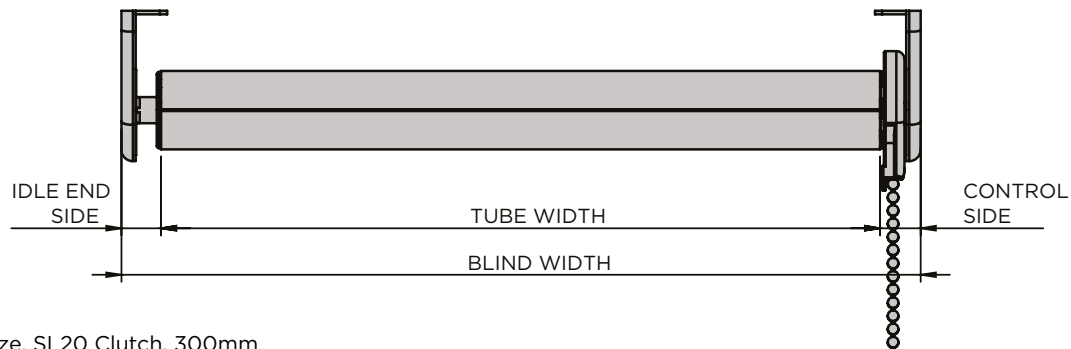
FUNCTIONAL BENEFITS

- Smooth operation
- Long-lasting fiberglass-filled nylon construction
- 2 clutch options to suit different applications
- Limited lifetime warranty



RSL50 ROLLER SYSTEM

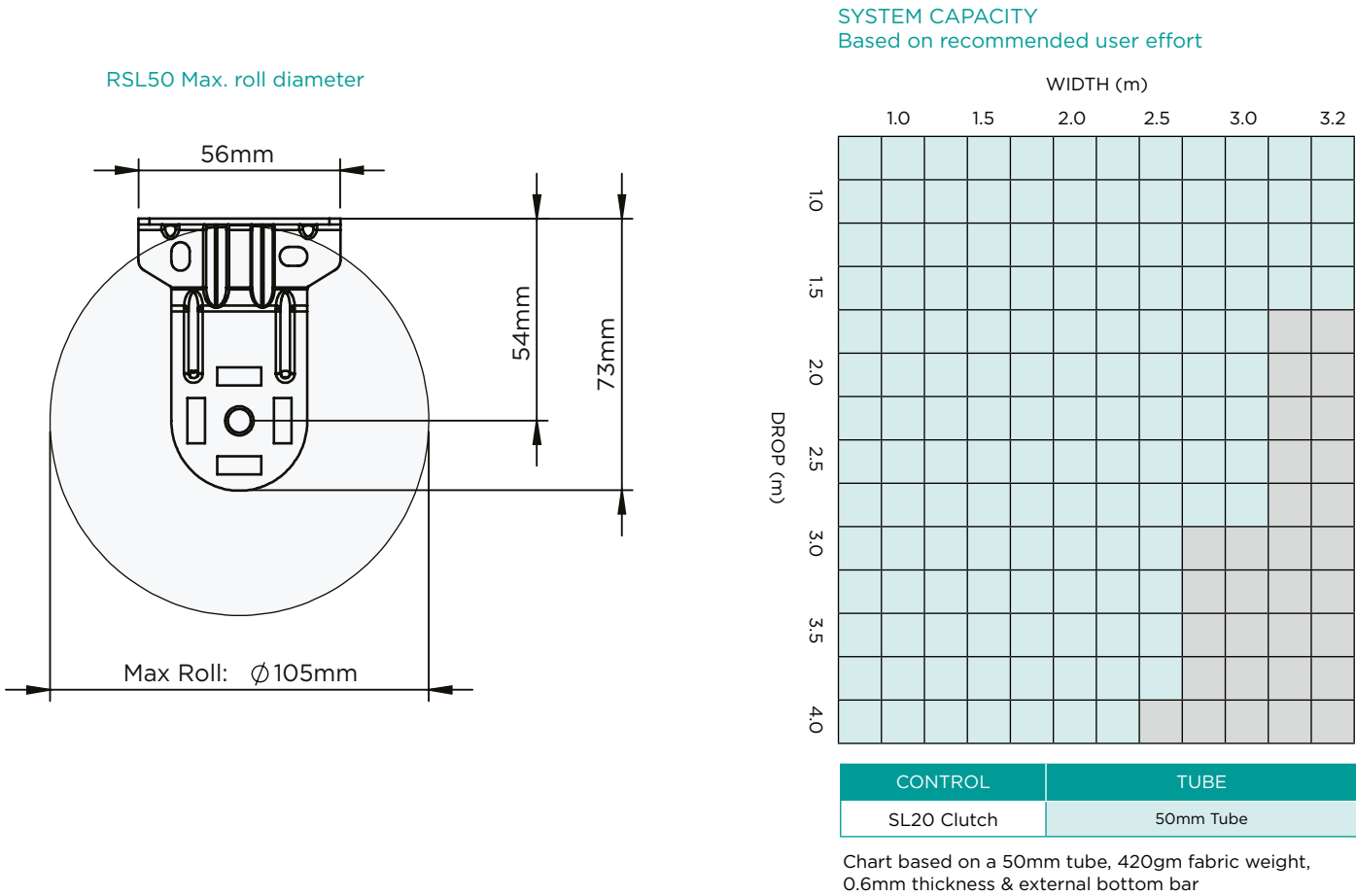
DEDUCTION



Minimum blind size, SL20 Clutch, 300mm

	OVERALL DEDUCTIONS	CONTROL SIDE (SL20)	IDLE SIDE DEDUCTIONS
Without covers	28	15	13
With covers	32	17	15

Fig. 3



Bottom bars

15mm
30mm
Double Slot

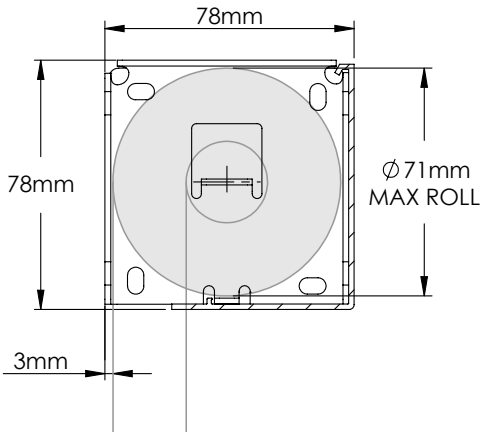
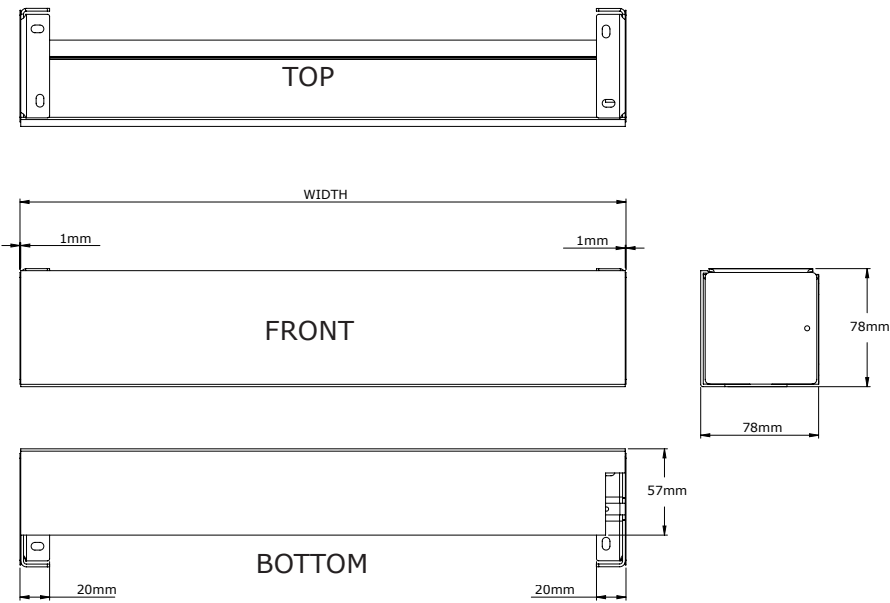
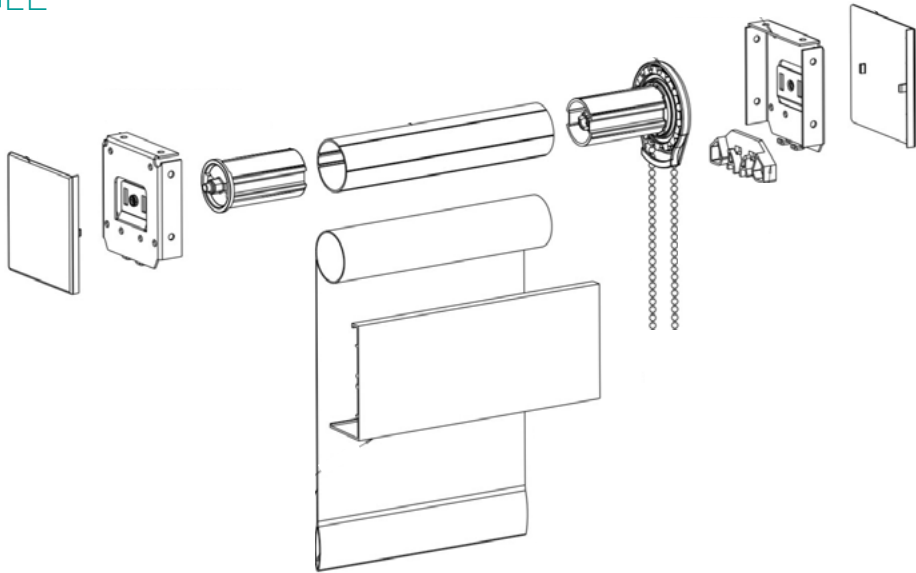
22mm
Alu Round

13mm
29mm
D 30

8mm
25mm
25mm Solid White

RSL50 ROLLER SYSTEM

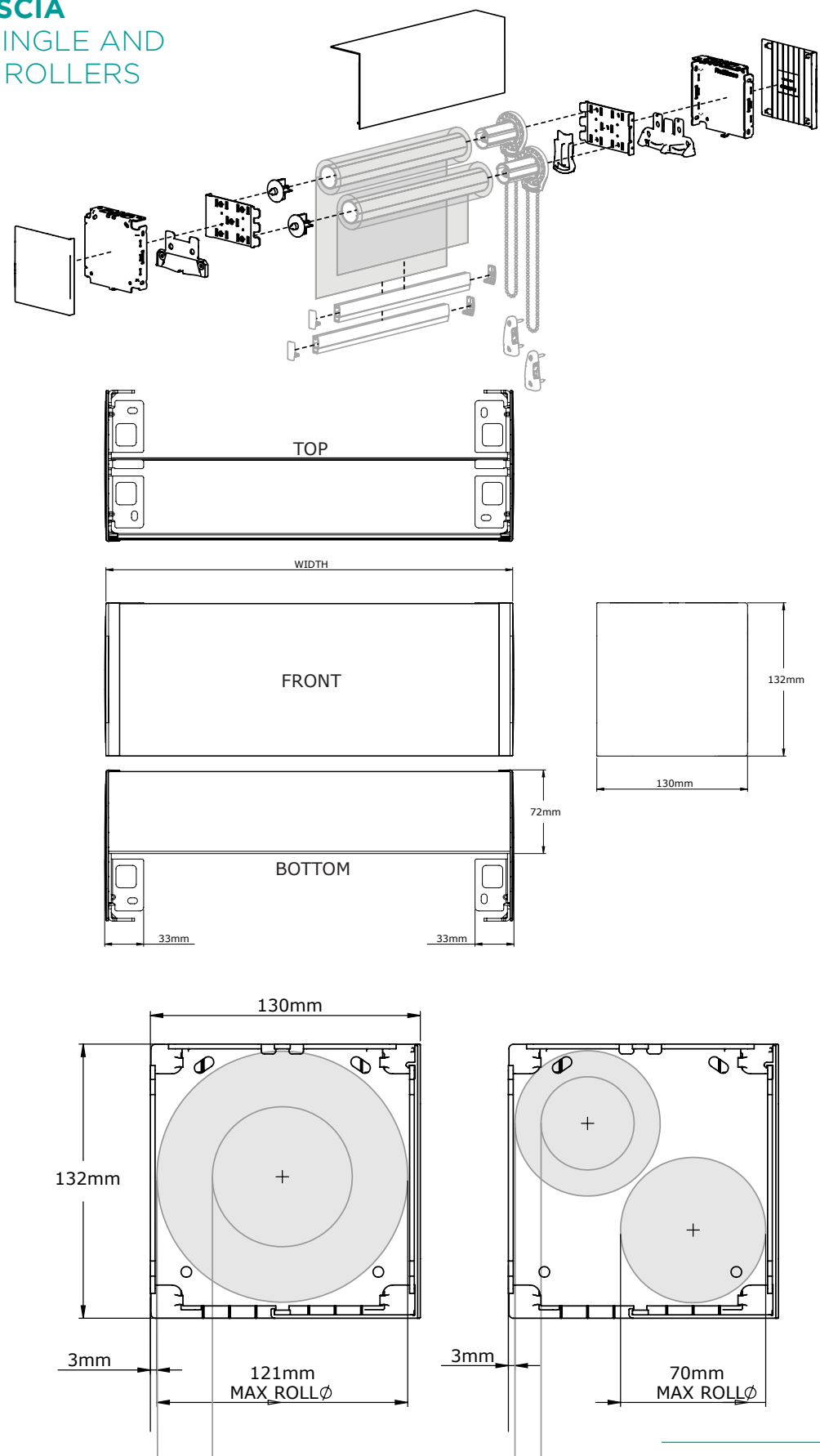
3" FASCIA
FOR SINGLE
ROLLER



*Bracket covers designed to be used outside the recess only

RSL50 ROLLER SYSTEM

5" FASCIA
FOR SINGLE AND
DUAL ROLLERS



*Bracket covers designed to be used outside the recess only

RSL50 ROLLER SYSTEM

Standards

- 50mm tube
- SL20 Clutch
- RH Controls (unless otherwise specified)
- Metal chain
- White brackets
- Sewn in bottom bar except on FR fabric which are white alu round (unless default bottom bar otherwise specified in fabric information)
- 1 child safety P-clip per blind

Optional extras

G200 Geared Mechanism
Bracket covers, white plastic
1mm Nylon coated steel guide wires (independently fixing) D30 bottom bar only (included in price)
Sewn in bottom bar
White aluminium bottom bar
Silver aluminium bottom bar
Welded bottom pocket with open ends
Welded bottom pocket with closed ends
D30 bottom bar white
Double Brackets
3" fascia for single roller
5" fascia for single and dual rollers
Back bar

MOTORISATION

Features

- Levelling Control
- Simple limit setting and adjustment
- Favorite position
- 3 operational speed settings available
- 2 way RF communication
- Rechargeable built in Li-ion battery
- Up to 500 up & down cycles, per charge (based on recommended max. shade size)
- New ARC protocol for simple programming

Benefits

AUTOMATE | Li-ion ARC motors offer a wire free rechargeable easy to use and program solution to suit a large range of applications with varying torques and speed levels. The Levelling Control feature allows for precise positioning of multiple shades ensuring perfect alignment. Additionally, a favourite position can be pre-set and recalled at any time.

Motorisation Optional extras

Rollease Automate ZERO Li-ion Motor 2Nm
Rollease Automate Li-ion Motor 3Nm
Rollease E6 240V RTS Motor 6Nm
Rollease M6 240V Hardwire Motor 6Nm
Automate LI-ON AC/DC charger (UK)
Automate 1 channel handset
Automate 5 channel handset
Automate 1 channel wall switch
Automate 15 channel wall switch
Push 5 channel White handset
Push 5 channel Black handset
Automate pulse hub
Automate solar panel
Sun sensor
Wind sensor

RSL63 ROLLER SYSTEM

RSL63

The RSL63 Roller System offers sleek rounded chain guard profiles which are ideal for both residential and commercial applications. The premium G400 Geared Clutch features an advanced geared patented technology, the planetary gearing mechanism enhances the lifting capacity by up to three times all whilst retaining minimal user effort.

AESTHETICAL FEATURES

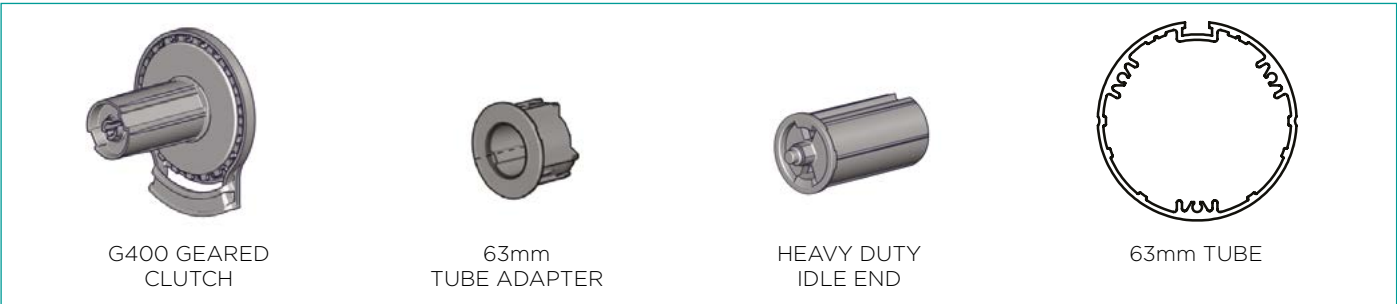
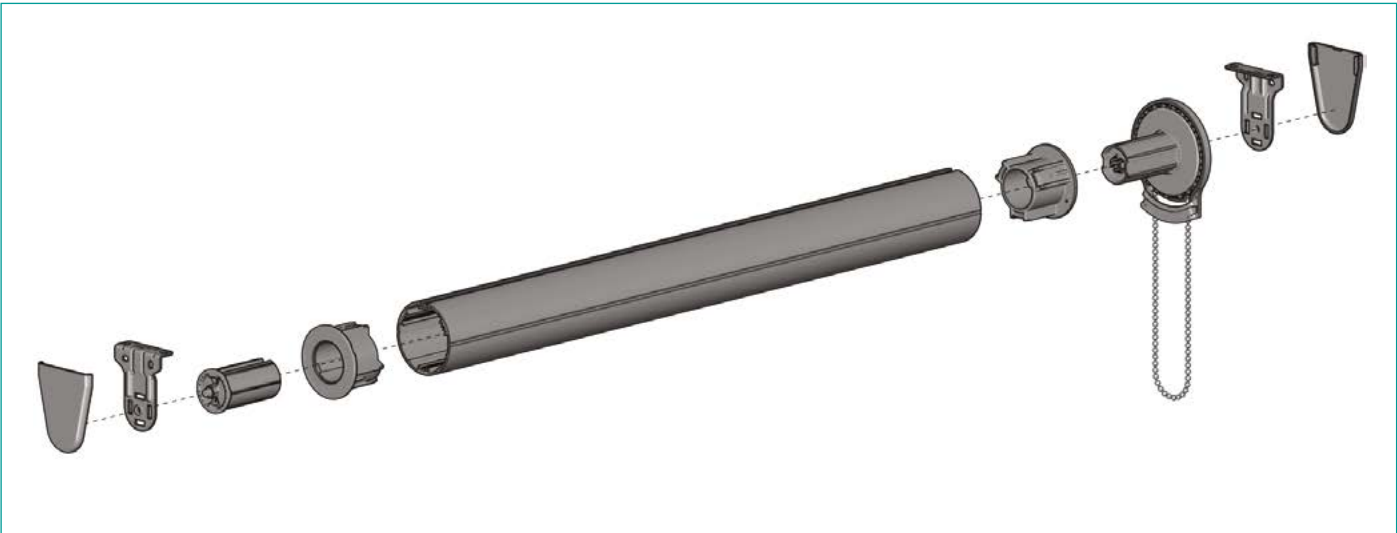
- Sleek, rounded chain guard design
- Reduced light gaps

ASSEMBLY / PRODUCTION FEATURES

- Greater flexibility in installation with spring loaded idle end
- Universal brackets
- Hooked clutches for a secure application
- Easy chain attachment

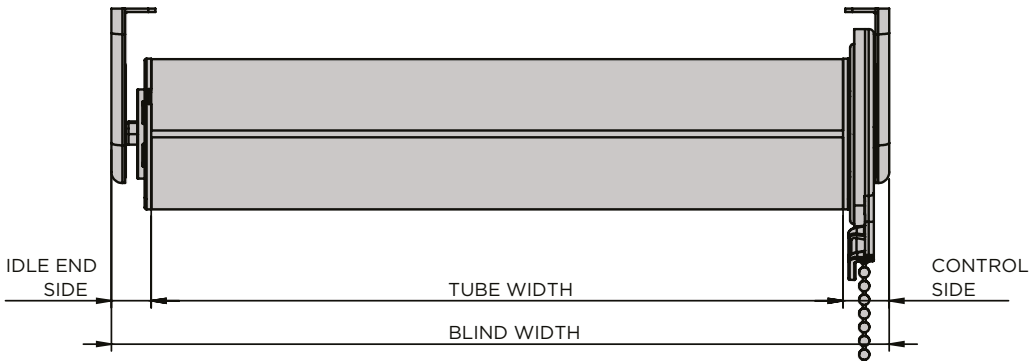
FUNCTIONAL BENEFITS

- Smooth operation
- Long-lasting fiberglass-filled nylon construction
- RSL63 G400 geared clutch (gearing ratio 1.7:1 - up to 24.1 Kg lifting capacity)
- Limited Lifetime Warranty



RSL63 ROLLER SYSTEM

DEDUCTION



Minimum blind size, G400 Geared Clutch, 300mm

	OVERALL DEDUCTIONS	CONTROL SIDE (G400)	IDLE SIDE DEDUCTIONS
Without covers	32	18	14
With covers	36	20	16

Fig. 4

SYSTEM CAPACITY
Based on recommended user effort

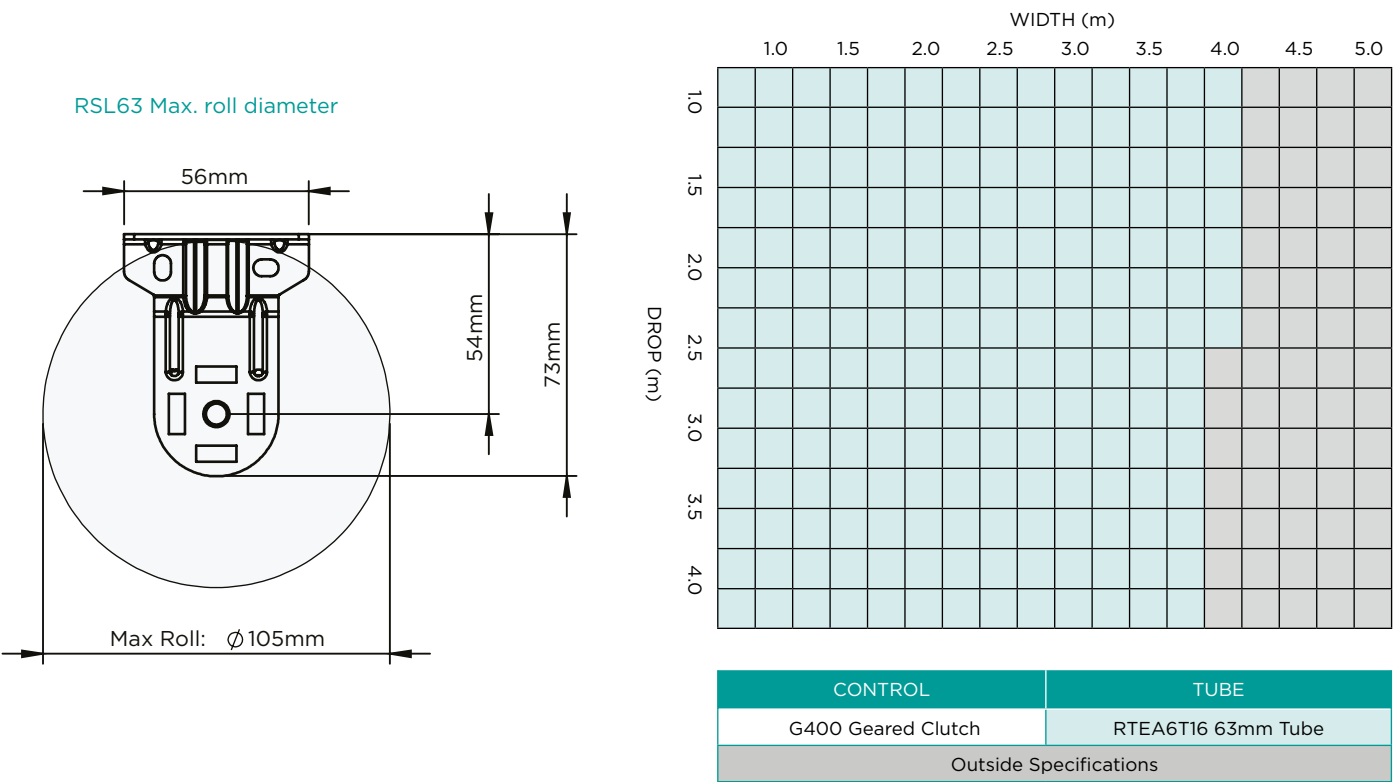
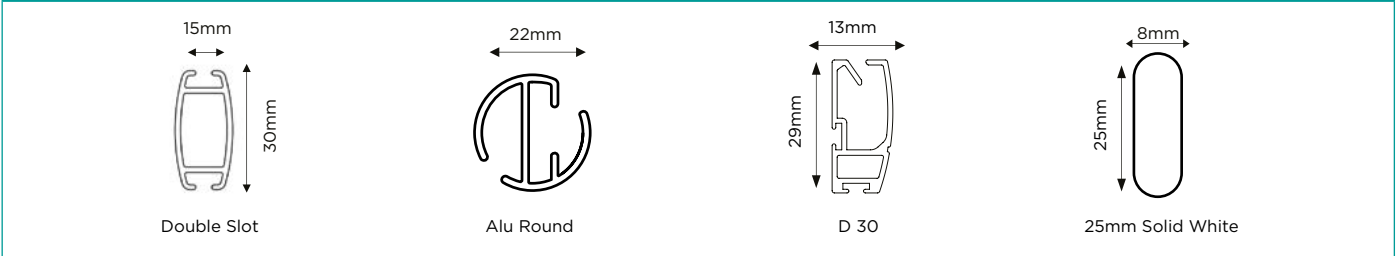


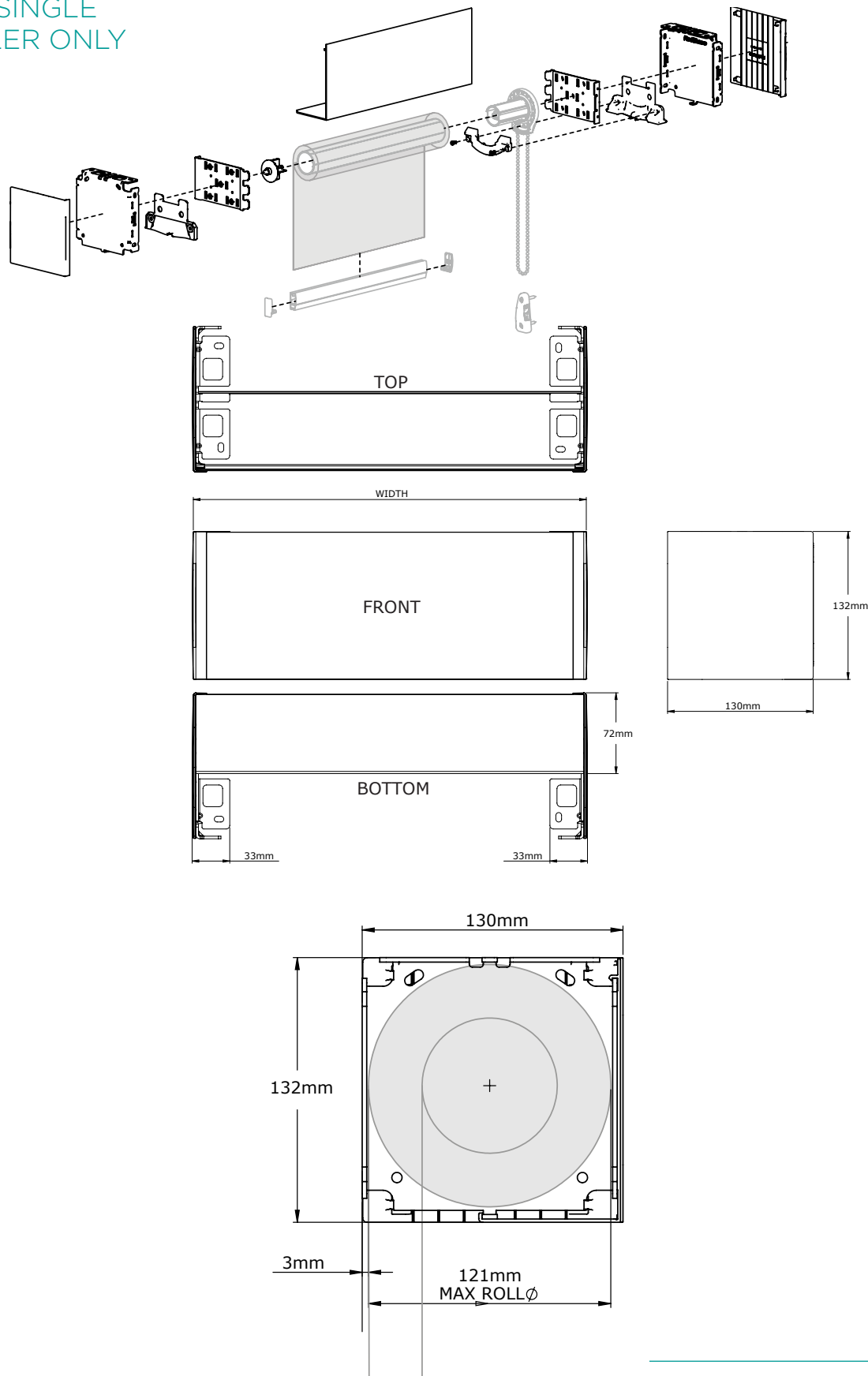
Chart based on a 63mm tube, 420gm fabric weight, 0.6mm fabric thickness & external bottom bar.

Bottom bars



RSL63 ROLLER SYSTEM

5" FASCIA
FOR SINGLE
ROLLER ONLY



*Bracket covers designed to be used outside the recess only

RSL63 ROLLER SYSTEM

Standards

- 63mm tube
- G400 Geared Clutch
- RH Controls (unless otherwise specified)
- Metal chain
- White brackets
- Sewn in bottom bar except on FR fabric which are white alu round (unless default bottom bar otherwise specified in fabric information)
- 1 child safety P-clip per blind

Optional extras

- Bracket covers, white plastic
- 1mm Nylon coated steel guide wires (independently fixing) D30 bottom bar only (included in price)
- Sewn in bottom bar
- White aluminium bottom bar
- Silver aluminium bottom bar
- Welded bottom pocket with open ends
- Welded bottom pocket with closed ends
- D30 bottom bar white
- 5" fascia for single roller only

MOTORISATION

Features

- Levelling Control
- Simple limit setting and adjustment
- Favorite position
- 3 operational speed settings available
- 2 way RF communication
- Rechargeable built in Li-ion battery
- Up to 500 up & down cycles, per charge (based on recommended max. shade size)
- New ARC protocol for simple programming

Benefits

AUTOMATE | Li-ion ARC motors offer a wire free rechargeable easy to use and program solution to suit a large range of applications with varying torques and speed levels. The Levelling Control feature allows for precise positioning of multiple shades ensuring perfect alignment. Additionally, a favourite position can be pre-set and recalled at any time.

Motorisation Optional extras

- Rollease Automate LI-ON Motor 10Nm
- Rollease 240V RTS Motor 15Nm
- Automate LI-ON AC/DC charger (UK)
- Automate 1 channel handset
- Automate 5 channel handset
- Automate 1 channel wall switch
- Automate 15 channel wall switch
- Push 5 channel White handset
- Push 5 channel Black handset
- Automate pulse hub
- Automate solar panel
- Sun sensor
- Wind sensor

RSL83 ROLLER SYSTEM

RSL83

The RSL83 Roller System offers sleek rounded chain guard profiles which are ideal for both residential and commercial applications. The premium G400 Geared Clutch features an advanced geared patented technology, the planetary gearing mechanism enhances the lifting capacity by up to three times all whilst retaining minimal user effort.

AESTHETICAL FEATURES

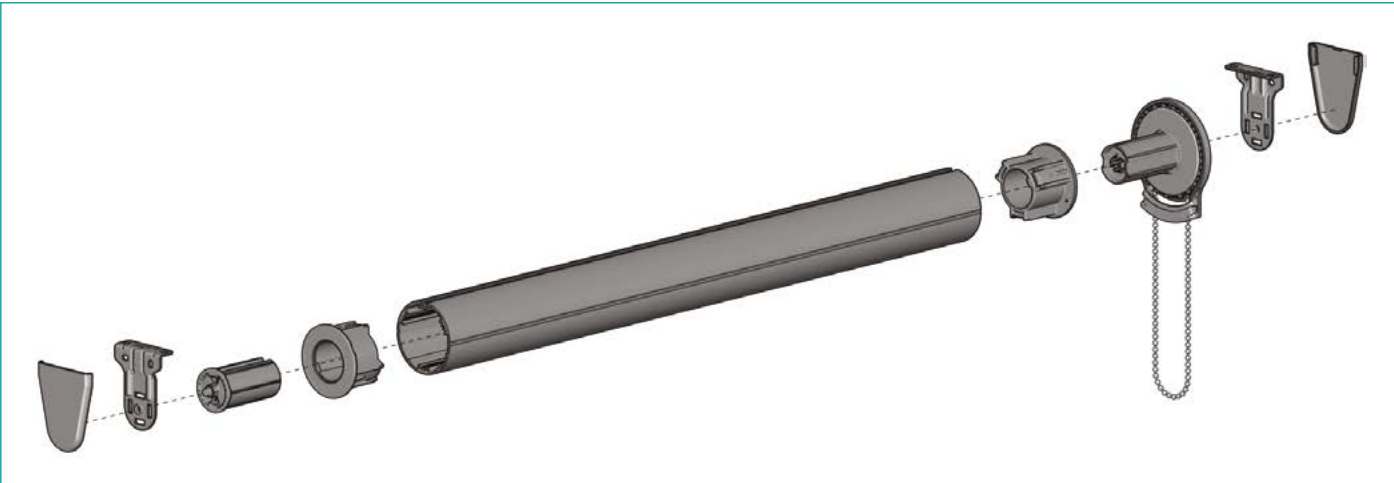
- Sleek, rounded chain guard design
- Reduced light gaps

ASSEMBLY / PRODUCTION FEATURES

- Greater flexibility in installation with spring loaded idle end
- Universal brackets
- Hooked clutches for a secure application
- Easy chain attachment

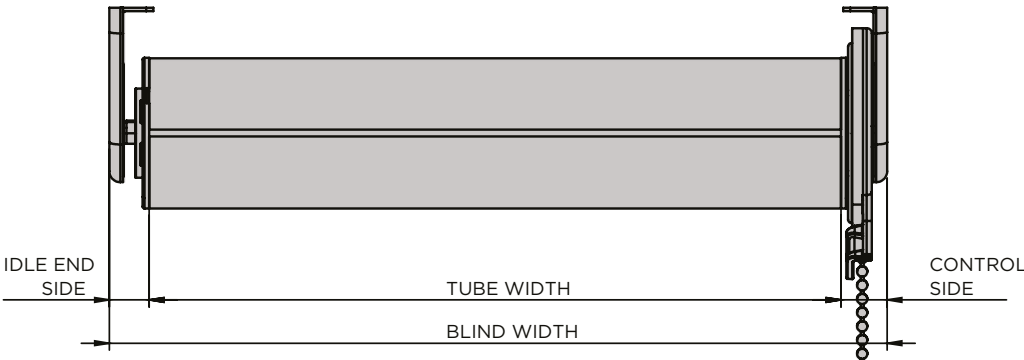
FUNCTIONAL BENEFITS

- Smooth operation
- Long-lasting fiberglass-filled nylon construction
- RSL83 G400 geared clutch (gearing ratio 1.7:1 - up to 24.1 Kg lifting capacity)
- Limited Lifetime Warranty



RSL83 ROLLER SYSTEM

DEDUCTION

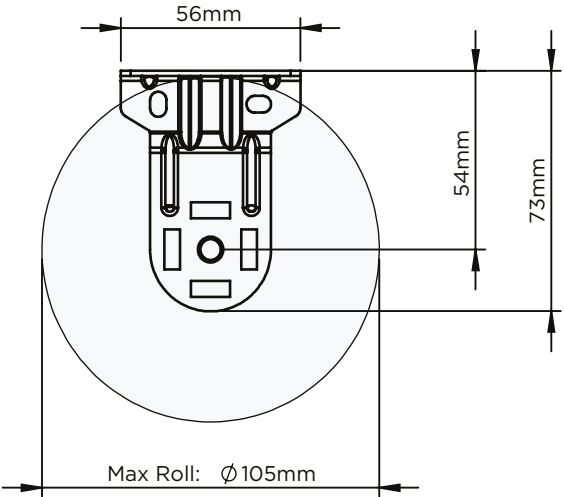


Minimum blind size, G400 Geared Clutch, 300mm

	OVERALL DEDUCTIONS	CONTROL SIDE (G400)	IDLE SIDE DEDUCTIONS
Without covers	32	18	14
With covers	36	20	16

Fig. 5

RSL83 Max. roll diameter



SYSTEM CAPACITY
Based on recommended user effort

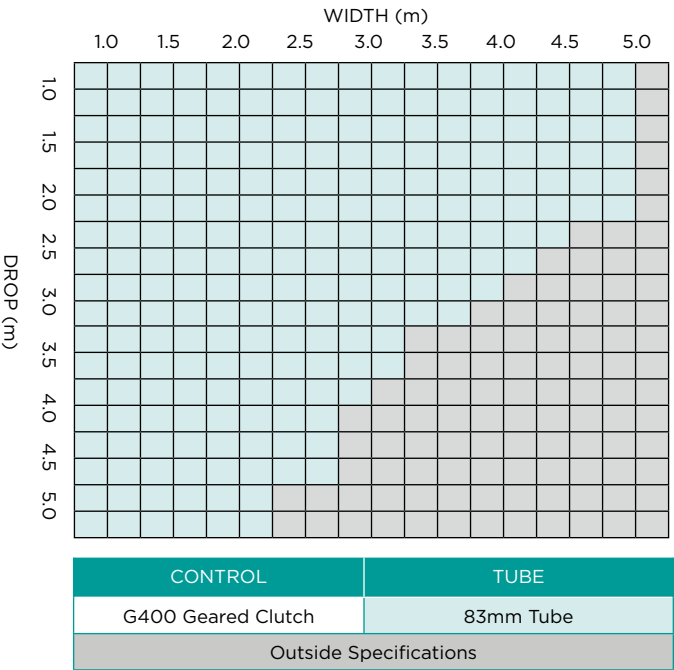
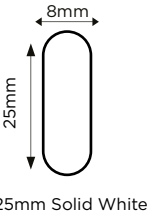
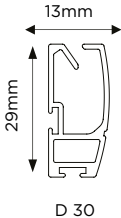
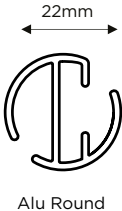
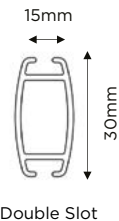


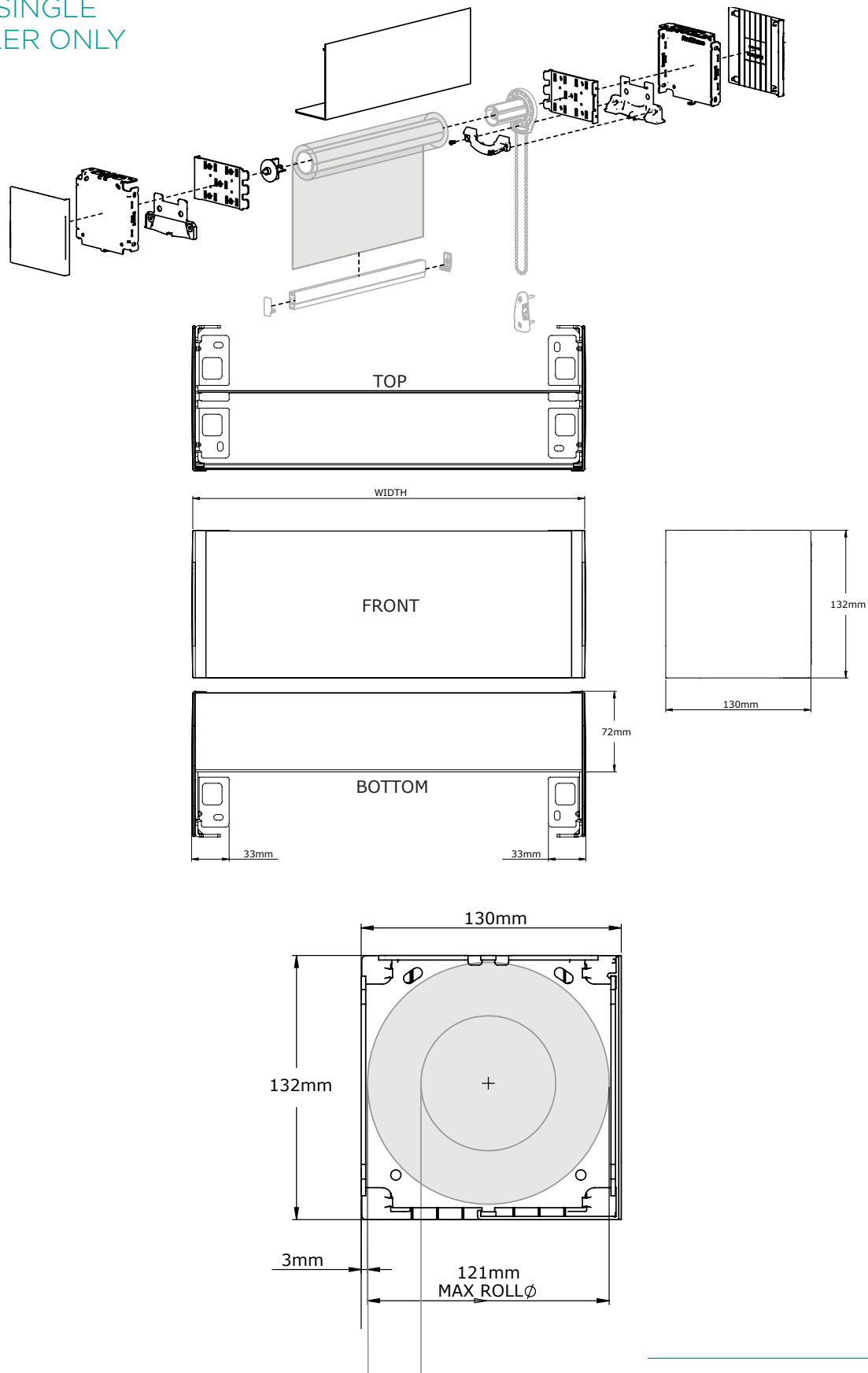
Chart based on a 83mm tube, 420gm fabric weight, 0.6mm fabric thickness & external bottom bar.

Bottom bars



RSL83 ROLLER SYSTEM

5" FASCIA
FOR SINGLE
ROLLER ONLY



*Bracket covers designed to be used outside the recess only

RSL83 ROLLER SYSTEM

Standards

- 83mm tube
- G400 Geared Clutch
- RH Controls (unless otherwise specified)
- Metal chain
- White brackets
- Sewn in bottom bar except on FR fabric which are white alu round (unless default bottom bar otherwise specified in fabric information)
- 1 child safety P-clip per blind

Optional extras

- Bracket covers, white plastic
- 1mm Nylon coated steel guide wires (independently fixing) D30 bottom bar only (included in price)
- Sewn in bottom bar
- White aluminium bottom bar
- Silver aluminium bottom bar
- Welded bottom pocket with open ends
- Welded bottom pocket with closed ends
- D30 bottom bar white
- 5" fascia for single roller only

MOTORISATION

Features

- Levelling Control
- Simple limit setting and adjustment
- Favorite position
- 3 operational speed settings available
- 2 way RF communication
- Rechargeable built in Li-ion battery
- Up to 500 up & down cycles, per charge (based on recommended max. shade size)
- New ARC protocol for simple programming

Benefits

AUTOMATE | Li-ion ARC motors offer a wire free rechargeable easy to use and program solution to suit a large range of applications with varying torques and speed levels. The Levelling Control feature allows for precise positioning of multiple shades ensuring perfect alignment. Additionally, a favourite position can be pre-set and recalled at any time.

Motorisation Optional extras

- Rollease Automate LI-ON Motor 6Nm
- Rollease 240V RTS Motor 15Nm
- Rollease 240V RTS Motor 6Nm
- Automate LI-ON AC/DC charger (UK)
- Automate 1 channel handset
- Automate 5 channel handset
- Automate 1 channel wall switch
- Automate 15 channel wall switch
- Push 5 channel White handset
- Push 5 channel Black handset
- Automate pulse hub
- Automate solar panel
- Sun sensor
- Wind sensor